



Grange Park, W5

£699,999

This one of a kind conversion apartment occupies the whole of the top two floors of this stunning detached period building with nearly 1500 sq.ft of living space over two floors. There are three bedrooms and two bathrooms with high ceilings throughout, along with an open plan kitchen living area with dividing doors.

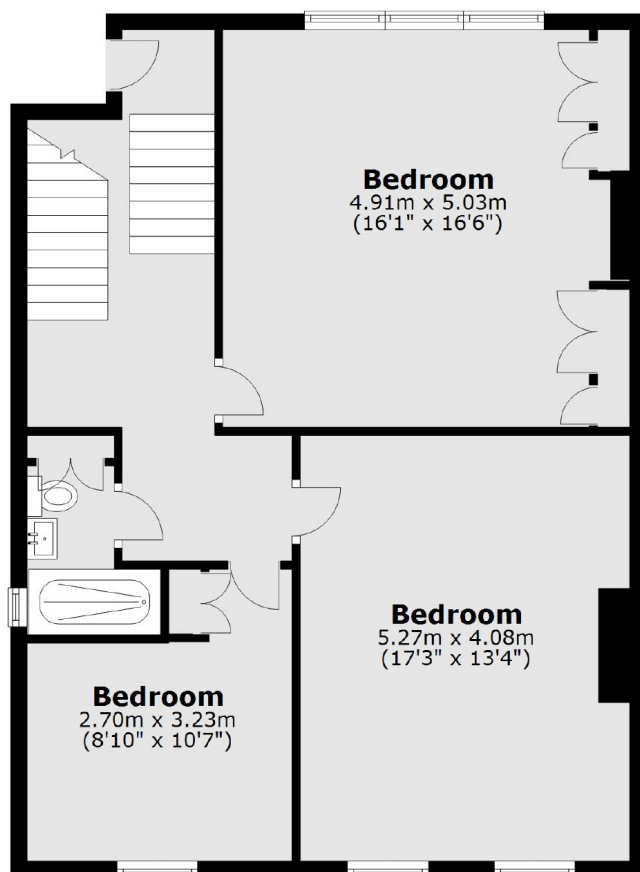
Close to the green spaces of Ealing Common and Ealing Broadway shopping centre which includes many restaurants, shops, bars and convenience stores. Ealing Broadway tube station with Central line, District line, Elizabeth Line, Mainline Rail is close by, along with Ealing Common, Piccadilly and District lines.

Features

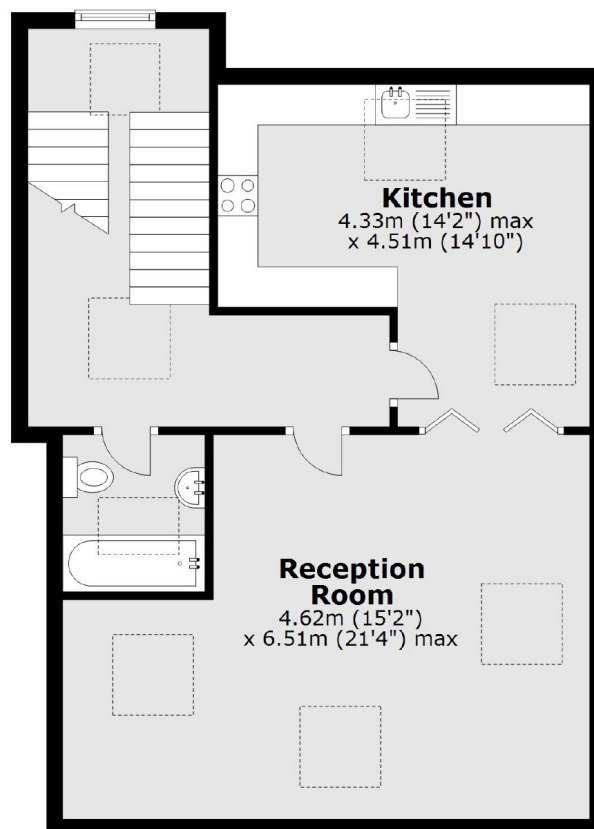
- Three Bedrooms
- Two Bathrooms
- Split Level
- Ealing Common
- No Onward Chain
- Long Leasehold

Grange Park, London, W5

Third Floor



Fourth Floor



Total area: approx. 138.2 sq. metres (1487.1 sq. feet)