



Hastings Road, W13

£435,000

Occupying the entire top floor of a small development with three flats is this two bedroom newly refurbished apartment. Ready to move in with an open plan kitchen/living room, two bedrooms, modern bathroom and no onward chain.

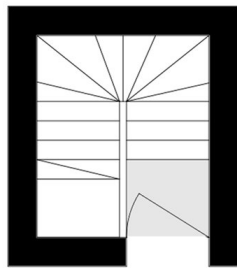
The apartment further benefits from an abundance of natural light throughout and extensive eaves storage, perfect for larger belongings.

Situated only 200 yards from West Ealing Station and just over half a mile from Ealing Broadway train station, close to the local amenities of the Uxbridge Road, Ealing Broadway and West Ealing.

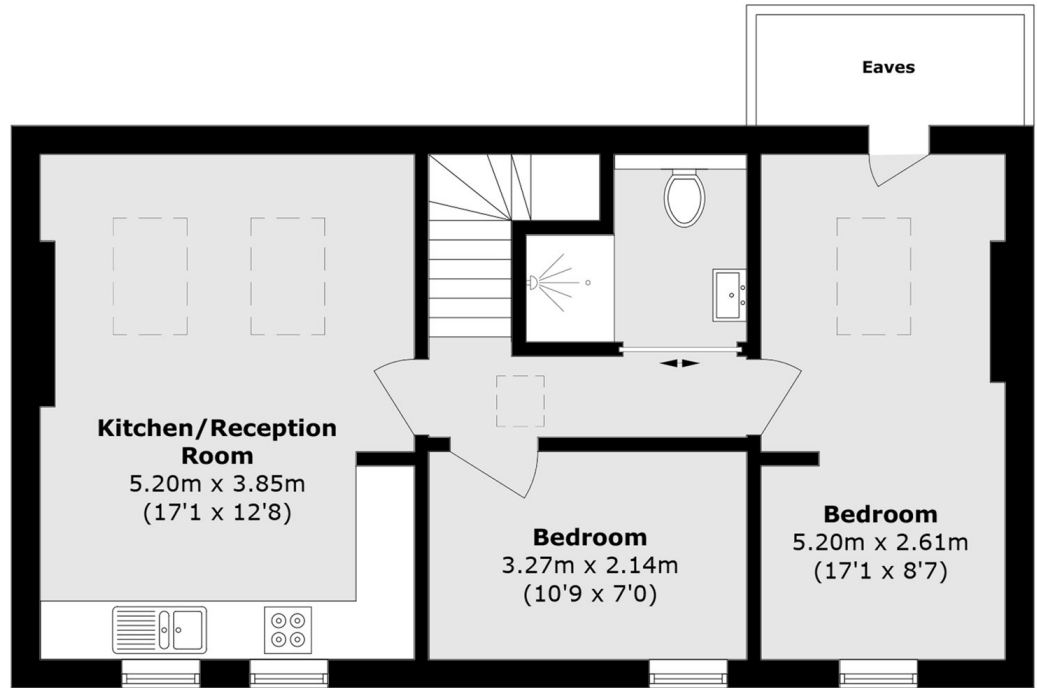
Features

- Two Bedrooms
- Top Floor
- Newly Renovated
- Close To Station
- Share Of Freehold
- No Onward Chain

Hastings Road,
London, W13



Ground Floor



First Floor

Total area (approx.): 55.2 sq. m (594.1 sq. ft)
(Excluding Eaves)