



## Manor Road, W13

### £485,000

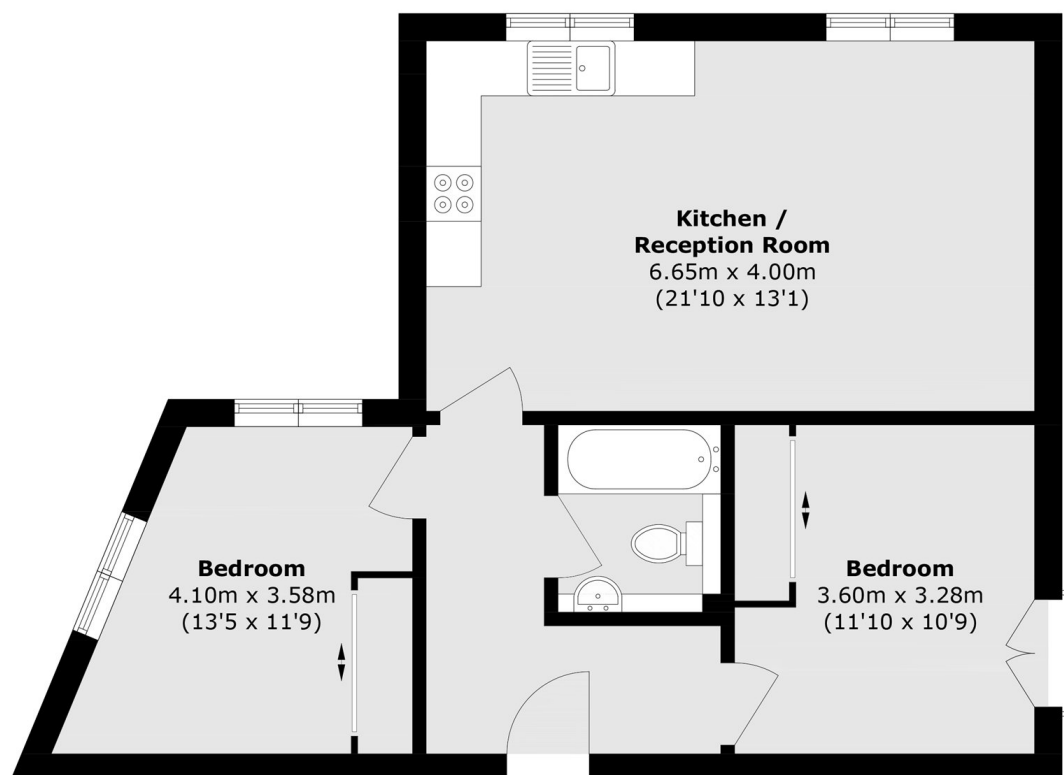
This two bedroom first floor apartment is one of nine properties in a small block that was constructed in 2012. In excellent order throughout, with oak flooring, American black walnut doors, there are two large bedrooms, modern bathroom, and a spacious open-plan kitchen/living room.

Located next to West Ealing station with the Elizabeth Line giving access to Bond Street in fourteen minutes, thirteen to Heathrow Airport and approximately thirty minutes to Canary Wharf. There is easy vehicular access to the A40 and M4.

### Features

- Two Bedrooms
- First Floor
- Excellent Condition
- Close To Station
- No Onward Chain
- Modern Construction

# Manor Road, London, W13



Total area (approx.): 63.8 sq. m (686.7 sq. ft)