



Creffield Road, W5

£650,000

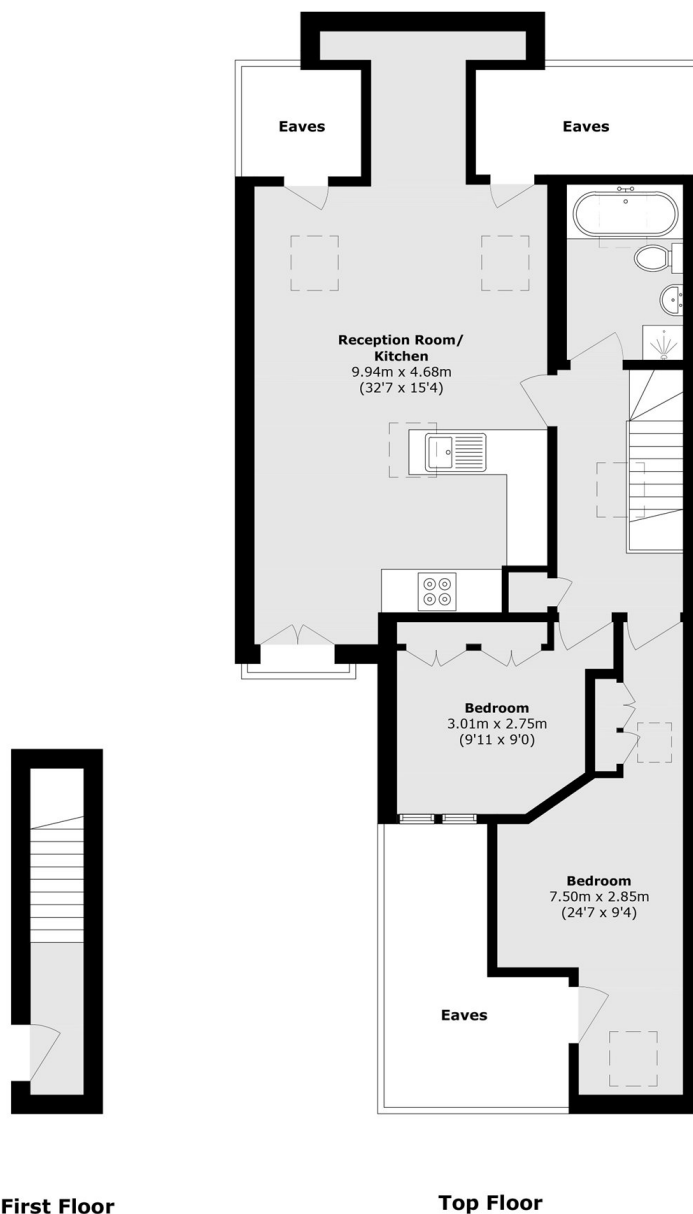
A two double bedroom period conversion occupying the entire top floor of this grand Edwardian building. Converted just five years ago, there is approximately five years of remaining build warranty. Immaculate throughout, with a large kitchen/living area including Juliette balcony and a shared communal garden.

Located just moments from the green space of Ealing Common, along with the tube station for the Piccadilly and District Lines. Central Line access is close by with West Acton station. Ealing Broadway is approximately three quarters of a mile for the new Elizabeth Line.

Features

- Top Floor
- Two Bedrooms
- New Conversion
- Close To Transport
- Communal Garden
- Long Underlying Lease

Creffield Road, London, W5



Total area (approx.): 83.7 sq. m (900.9 sq. ft)
(Excluding Eaves)

Dexters

Ealing
2 New Ealing Broadway
London
W5 2NU
Sales
020 8810 0909

Energy Rating: C. We aim to make our particulars both accurate and reliable. However they are not guaranteed; nor do they form part of an offer or contract. If you require clarification on any points then please contact us, especially if you're traveling some distance to view. Please note that appliances and heating systems have not been tested and therefore no warranties can be given as to their good working order.

 **RICS** | Regulated
Estate Agent
and Letting Agent

[dexters.co.uk](https://www.dexters.co.uk)