

## Priory Gardens, W5

£325,000

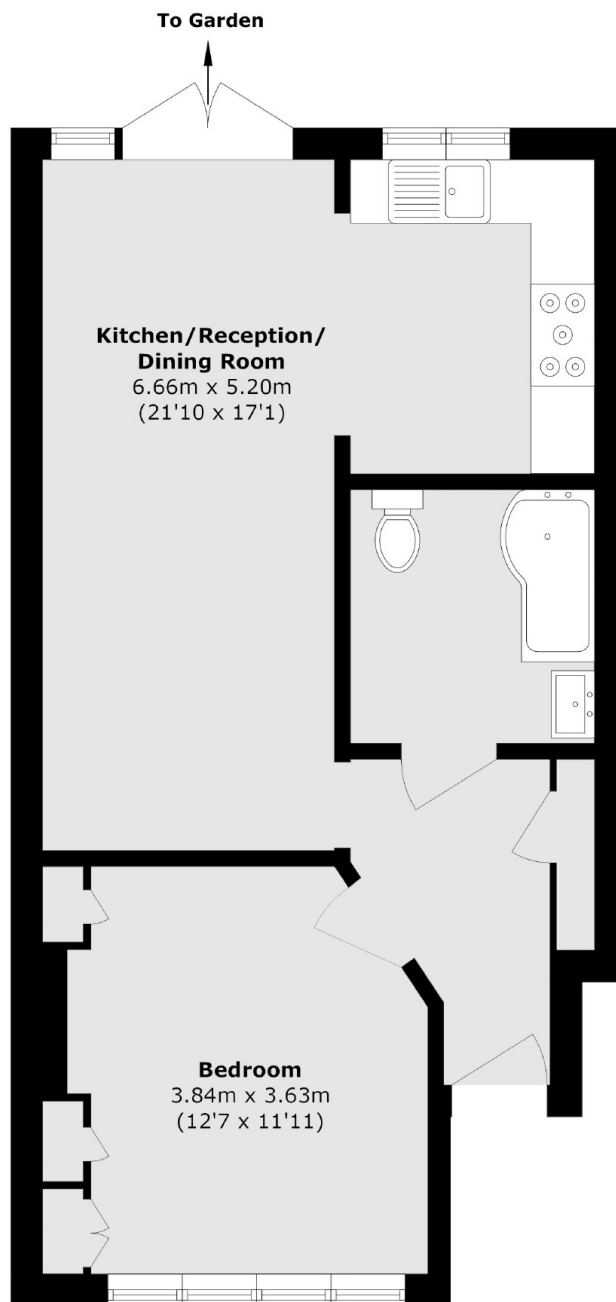
This recently refurbished one bedroom flat offers over 500sqft of living space. It features a spacious open-plan reception room that leads to a private garden. The property also benefits from off-street parking and a long lease, making it a perfect first-time buy or investment opportunity.

The property is conveniently located near Hanger Lane tube station (Central Line) and Alperton tube station (Piccadilly Line). A large Sainsbury's superstore is also close by. Wembley Central is approximately 1.5 miles away, and Ealing Broadway is around 2 miles away.

### Features

- Private Garden
- One Bedroom
- Long Lease
- Off-Street Parking
- Ground Floor
- Close to Transport

# Priory Gardens, London, W5



Total area (approx.): 50.8 sq. m (546.8 sq. ft)

## Dexters

Ealing  
2 New Ealing Broadway  
London  
W5 2NU  
Sales  
020 8810 0909

Energy Rating: C. We aim to make our particulars both accurate and reliable. However they are not guaranteed; nor do they form part of an offer or contract. If you require clarification on any points then please contact us, especially if you're traveling some distance to view. Please note that appliances and heating systems have not been tested and therefore no warranties can be given as to their good working order.

 **RICS** | Regulated  
Estate Agent  
and Letting Agent

[dexters.co.uk](https://www.dexters.co.uk)