



## Tewkesbury Road, W13

### £490,000

This split-level, two double bedroom apartment in the Jigsaw development is bright, modern, and well laid out. Floor-to-ceiling windows flood the space with light, while the private west-facing roof terrace is perfect for relaxing or entertaining. With no onward chain, it's ready to move straight into.

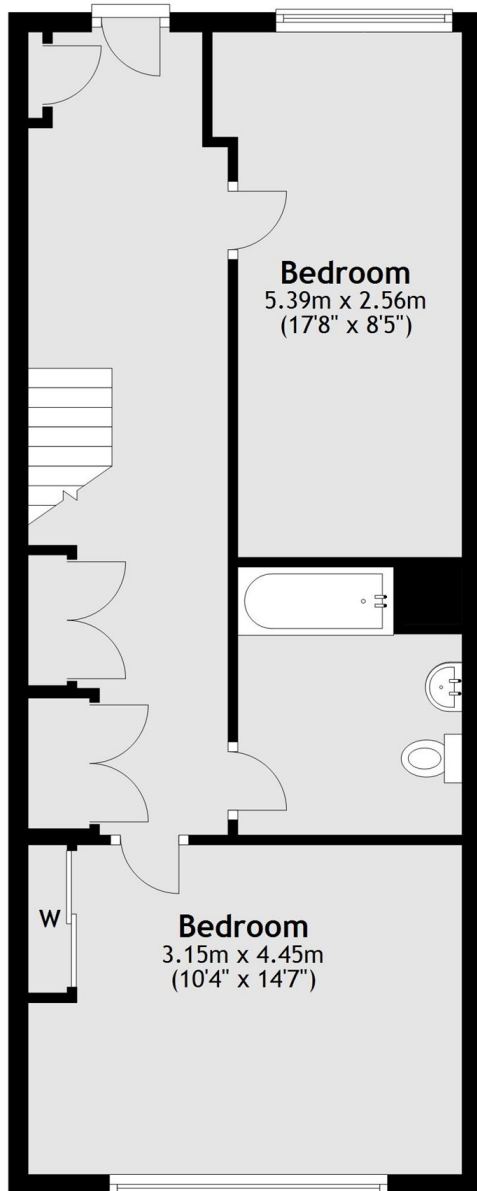
Located on Tewkesbury Road, the apartment sits among landscaped communal gardens in a peaceful spot, yet West Ealing Crossrail station, shops, cafés, and green spaces are all close by. Ideal for first-time buyers or young families seeking space and convenience.

### Features

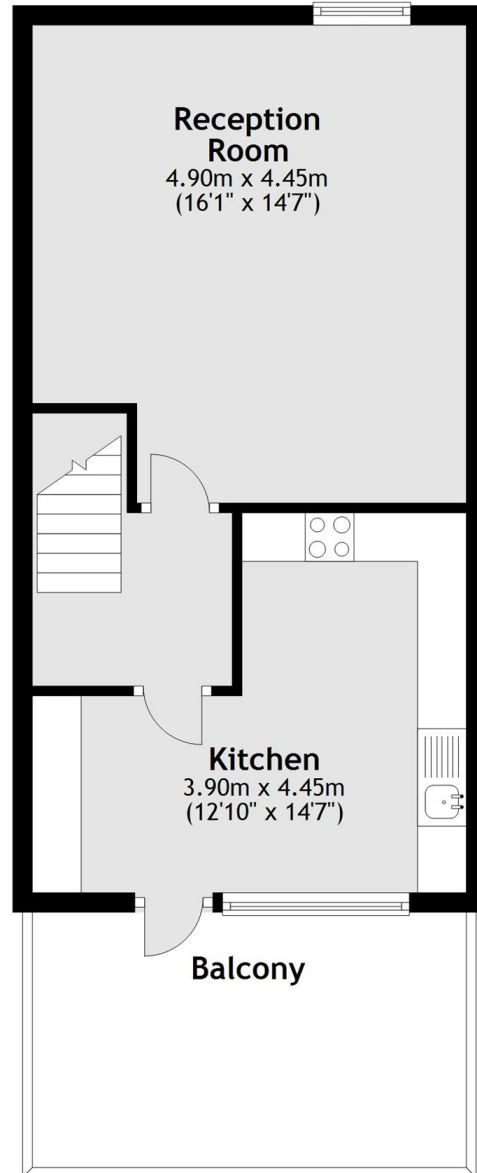
- Split Level
- Two Double Bedrooms
- Floor TO Ceiling Windows
- Private West Facing Balcony
- Moments To Crossrail
- No Onward Chain

# Tewkesbury Road, London, W13

**Fourth Floor**



**Fifth Floor**



Total area: approx. 91.8 sq. metres (988.0 sq. feet)