



## Leopold Road, W5

### £699,950

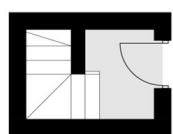
A spacious and bright two-bedroom period conversion, occupying the entire top floor of a detached Victorian house. This flat has recently been fully modernised including new kitchen, new bathroom and new flooring, lighting and insulation throughout. Split over two levels, the flat offers an open plan kitchen and living room and substantial storage options including a fully boarded attic. The property benefits from a residents communal garden and secure off-street parking.

Leopold Road faces the green space of Ealing Common and is just moments away from Ealing Common tube (District and Piccadilly lines). Ealing Broadway shopping centre and Elizabeth Line station are 0.7 miles away with access to Canary Wharf in around thirty minutes.

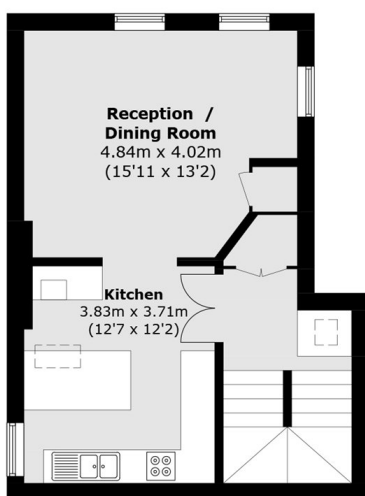
### Features

- Two Double Bedrooms
- Top Floor
- Newly Modernised
- Gated Parking
- Communal Garden
- Share of Freehold

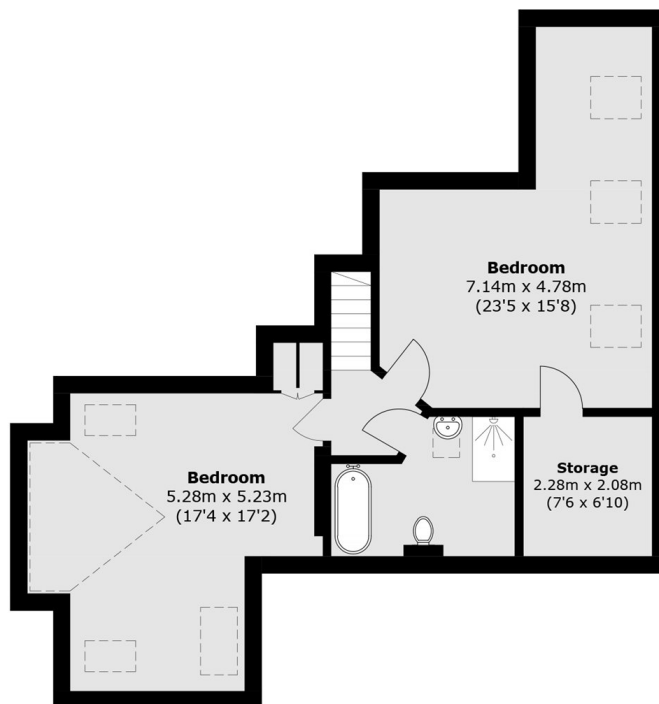
# Leopold Road, London, W5



**First Floor**



**Second Floor**



**Third Floor**

Total area (approx.): 110.8 sq. m (1,192.5 sq. ft)