

Rosebank Way, W3

£525,000

A three bedroom newly built maisonette with its own private entrance spanning just under 750 sq.ft of internal space. The property has access to its own private patio garden and would make an ideal first time purchase.

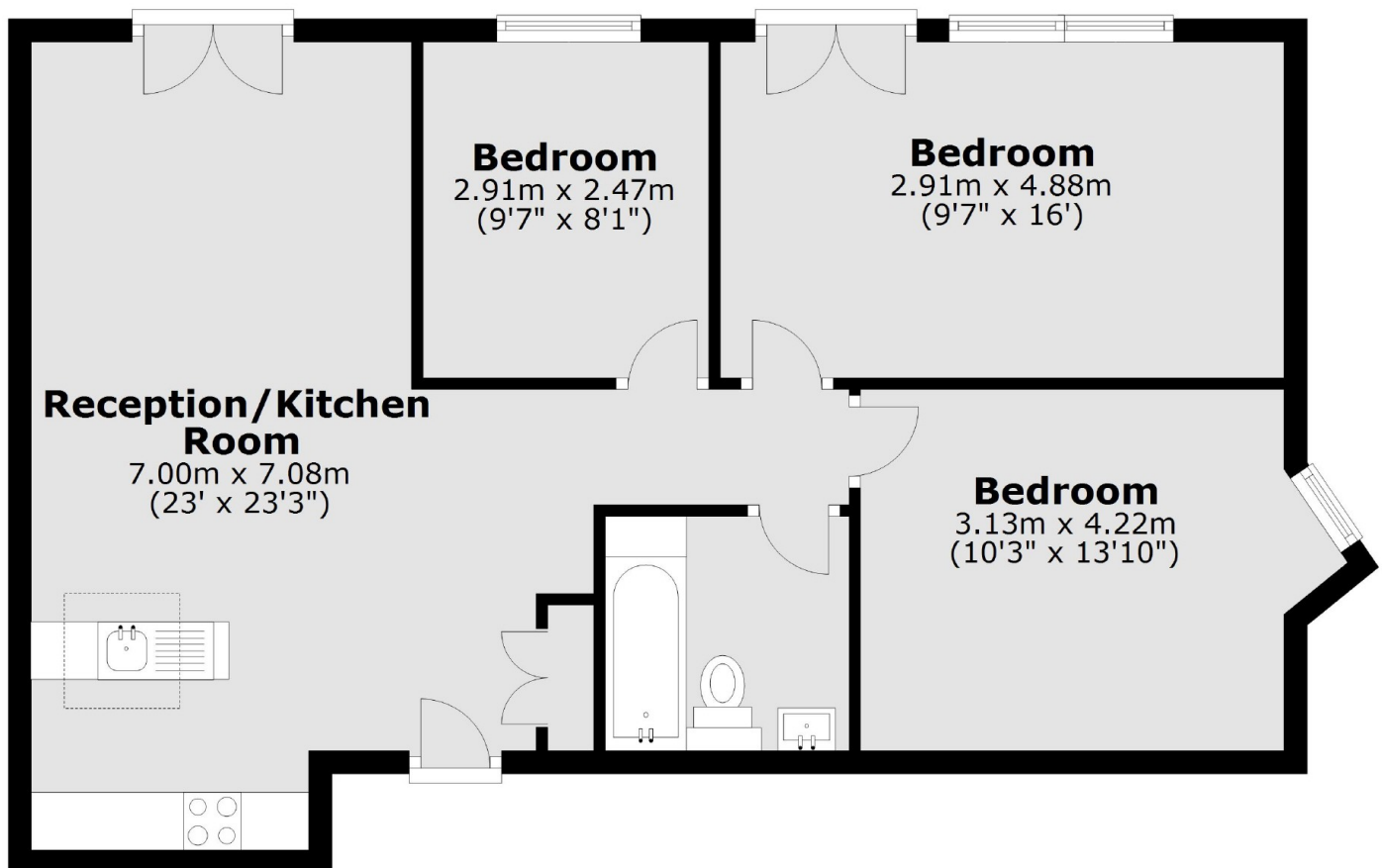
Just over a quarter of a mile from Acton Main Line station (forthcoming Crossrail) and under half a mile from North Acton tube station (Central line).

Features

New Build
Three Bedrooms
Private Entrance
Circa 750 sq.ft
Ground Floor
Private Garden

Rosebank Way,
London, W3

Ground Floor



Total area: approx. 69.0 sq. metres (742.8 sq. feet)

Contact

To arrange a viewing call our office on the number below or visit our website.



Energy Rating: B. We aim to make our particulars both accurate and reliable. However they are not guaranteed; nor do they form part of an offer or contract. If you require clarification on any points then please contact us, especially if you're traveling some distance to view. Please note that appliances and heating systems have not been tested and therefore no warranties can be given as to their good working order.