



Lynton Road, W3

£1,300,000


This semi-detached Edwardian period home is arranged over three floors with five bedrooms and circa 2,000 sq.ft of internal space. The house has a stunning south-facing garden, driveway parking and will be sold with no chain.

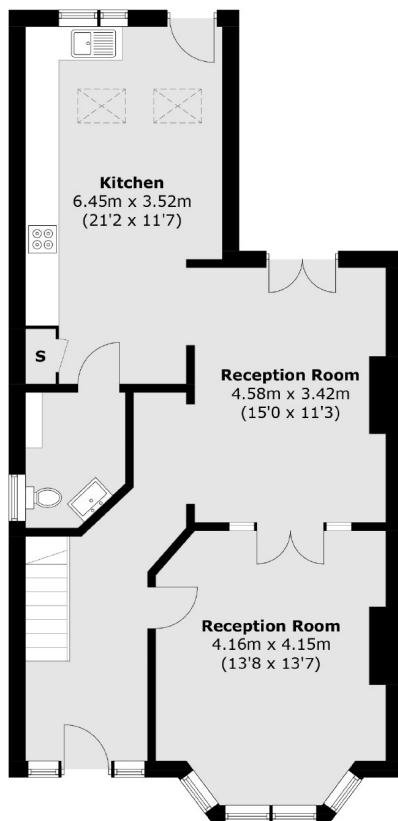
Under a quarter of a mile from Acton Main Line station (forthcoming Elizabeth line) and just over three quarters of a mile from West Acton and North Acton tube stations (Central line)

Features

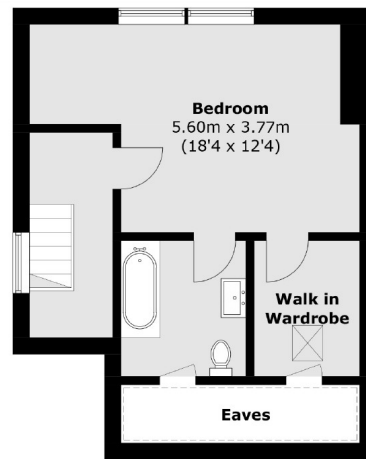
Edwardian Period House
Five Bedrooms
Circa 2,000 sq.ft
Driveway Parking
No Onward Chain
South-Facing Garden

Lynton Road, London, W3

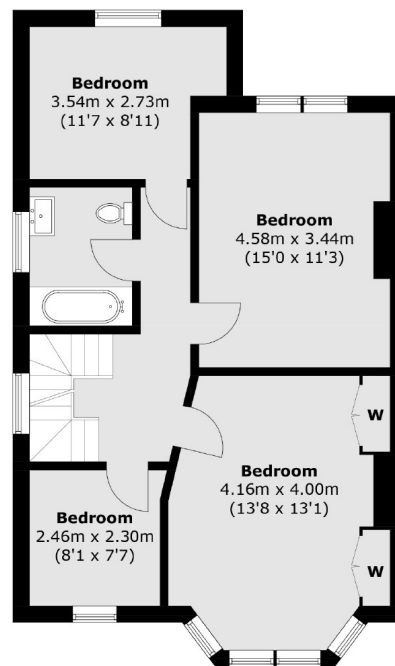
 = Reduced headroom below 1.5m / 5'0



Ground Floor



Second Floor



First Floor

Total area (approx.): 177 sq. m (1,905.1 sq. ft)
(Excluding Eaves)

Contact

To arrange a viewing call our office on the number below or visit our website.



Energy Rating: D. We aim to make our particulars both accurate and reliable. However they are not guaranteed; nor do they form part of an offer or contract. If you require clarification on any points then please contact us, especially if you're traveling some distance to view. Please note that appliances and heating systems have not been tested and therefore no warranties can be given as to their good working order.