



First Avenue, W3

£1,225,000

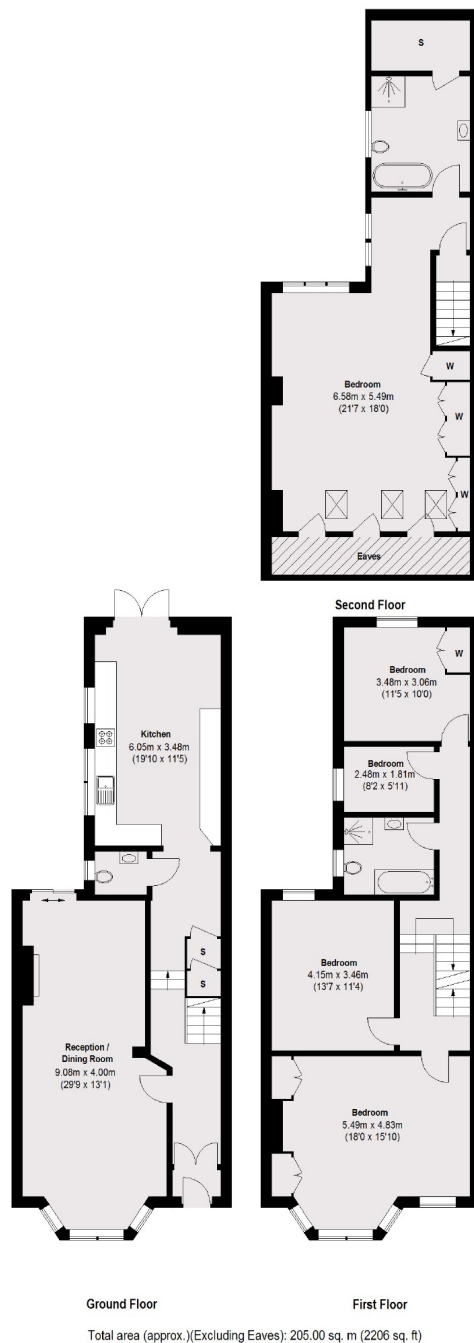
A five bedroom period home arranged over three floors and spanning circa 2,200 sq.ft of internal floor space. The house has a separate kitchen and a 29' by 13' double front reception room.

Under three quarters of a mile from East Acton tube station (Central line) and under a mile from Acton Central station (Overground).

Features

Five Bedrooms
Three Floors
No Onward Chain
Circa 2,200 sq.ft
Two Bathrooms
Downstairs WC

First Avenue, London, W3



Contact

To arrange a viewing call our office on the number below or visit our website.



Energy Rating: D. We aim to make our particulars both accurate and reliable. However they are not guaranteed; nor do they form part of an offer or contract. If you require clarification on any points then please contact us, especially if you're traveling some distance to view. Please note that appliances and heating systems have not been tested and therefore no warranties can be given as to their good working order.