



## Cumberland Park, W3

### £450,000

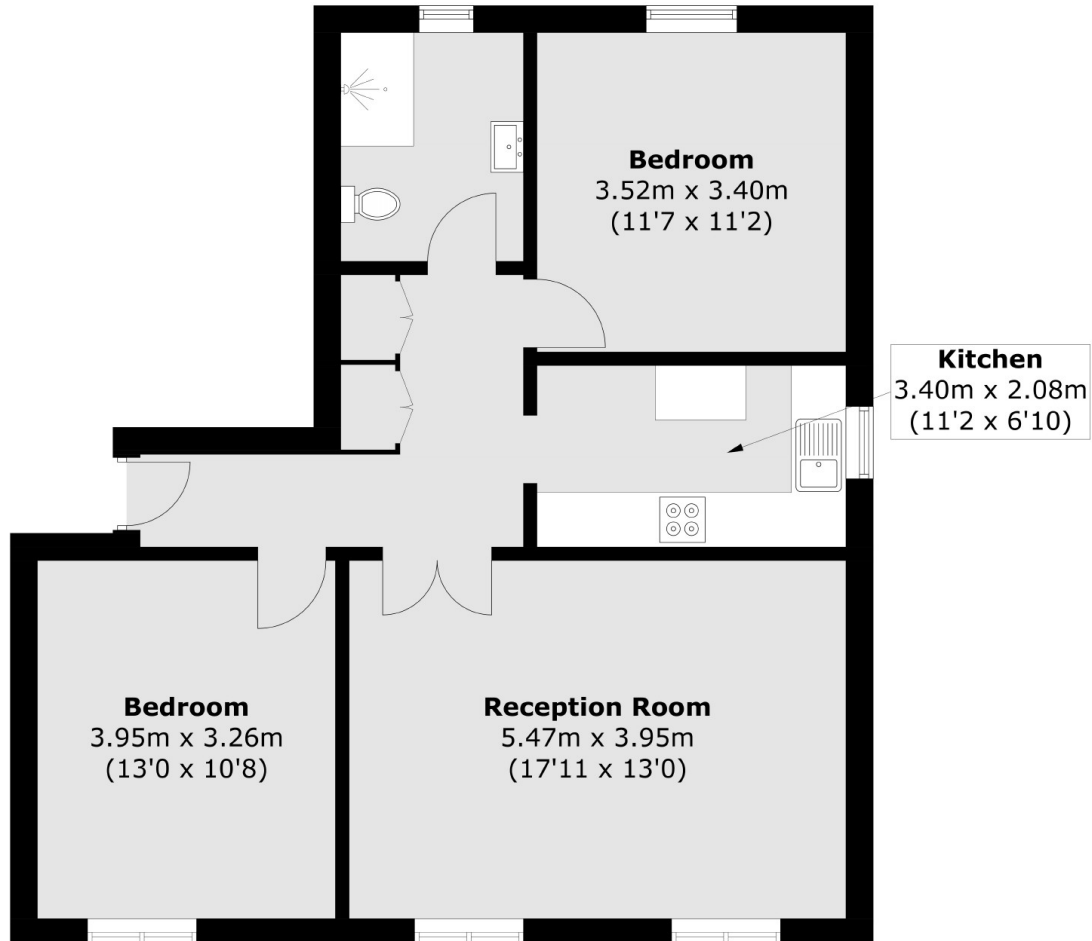
A two double bedroom top floor Victorian conversion nestled within the very sought after Poet's Corner. This home offers a modern and contemporary mix with a new kitchen and bathroom. Further, benefitting with a share of the freehold and spanning over 750 sq.ft

Located less than a 10 minute walk to Acton Main Line station (Elizabeth line) and Acton Central (Overground line). In addition, Churchfield road is a short walk away to boutique and local artisan eateries.

### Features

- Two Double Bedrooms
- Poet's Corner
- Share of Freehold
- Communal Gardens
- Gated Off Street Parking
- No Onward Chain

# Cumberland Park, London, W3



Total area (approx.): 70.2 sq. m (755.6 sq. ft)

## Dexters

Acton  
171 High Street  
London  
W3 6LP  
Sales  
020 8896 2112

Energy Rating: D. We aim to make our particulars both accurate and reliable. However they are not guaranteed; nor do they form part of an offer or contract. If you require clarification on any points then please contact us, especially if you're traveling some distance to view. Please note that appliances and heating systems have not been tested and therefore no warranties can be given as to their good working order.

 **RICS** | Regulated  
Estate Agent  
and Letting Agent

[dexters.co.uk](https://www.dexters.co.uk)