



Dordrecht Road, W3

£790,000

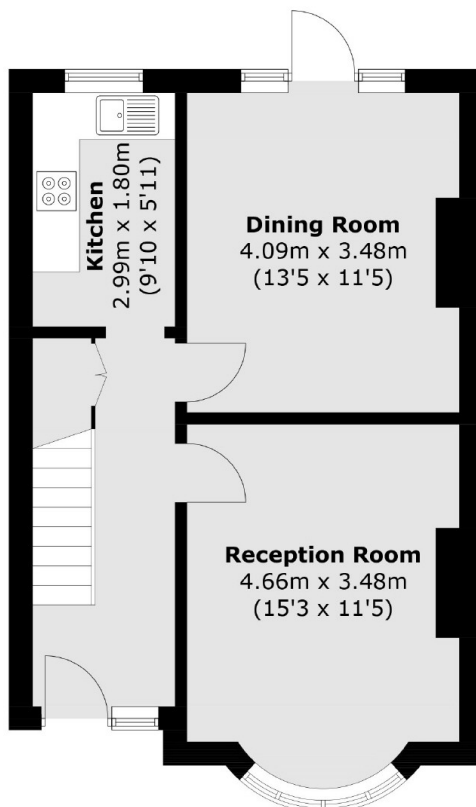
A charming three bedroom Edwardian home with front and rear reception rooms, separate kitchen and arranged over two floors. This property sits just under 1,000 sq.ft, has significant potential to be extended and borders Askew Village.

Located under a mile to Stamford Brook station (District line) and just over a half mile to Acton Central station (Overground line) as well as being conveniently located to both Askew Village and Turnham Green.

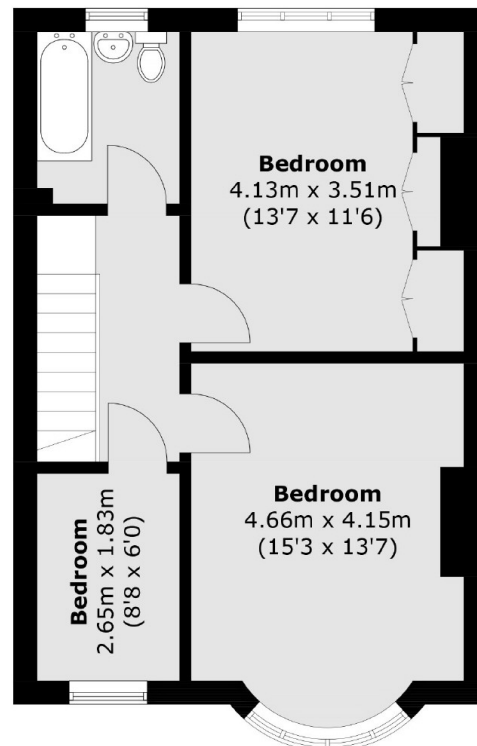
Features

- Three Bedrooms
- Edwardian Home
- No Onward Chain
- Potential To Extend (STPP)
- Circa 1,000 sq.ft
- Borders Askew Village

Dordrecht Road,
London, W3



Ground Floor



First Floor

Total area (approx.): 91.6 sq. m (986.0 sq. ft)

Dexters

Acton
171 High Street
London
W3 6LP
Sales
020 8896 2112

Energy Rating: E. We aim to make our particulars both accurate and reliable. However they are not guaranteed; nor do they form part of an offer or contract. If you require clarification on any points then please contact us, especially if you're traveling some distance to view. Please note that appliances and heating systems have not been tested and therefore no warranties can be given as to their good working order.

 **RICS** | Regulated
Estate Agent
and Letting Agent

[dexters.co.uk](https://www.dexters.co.uk)