

Lakeside Drive, NW10

£385,000

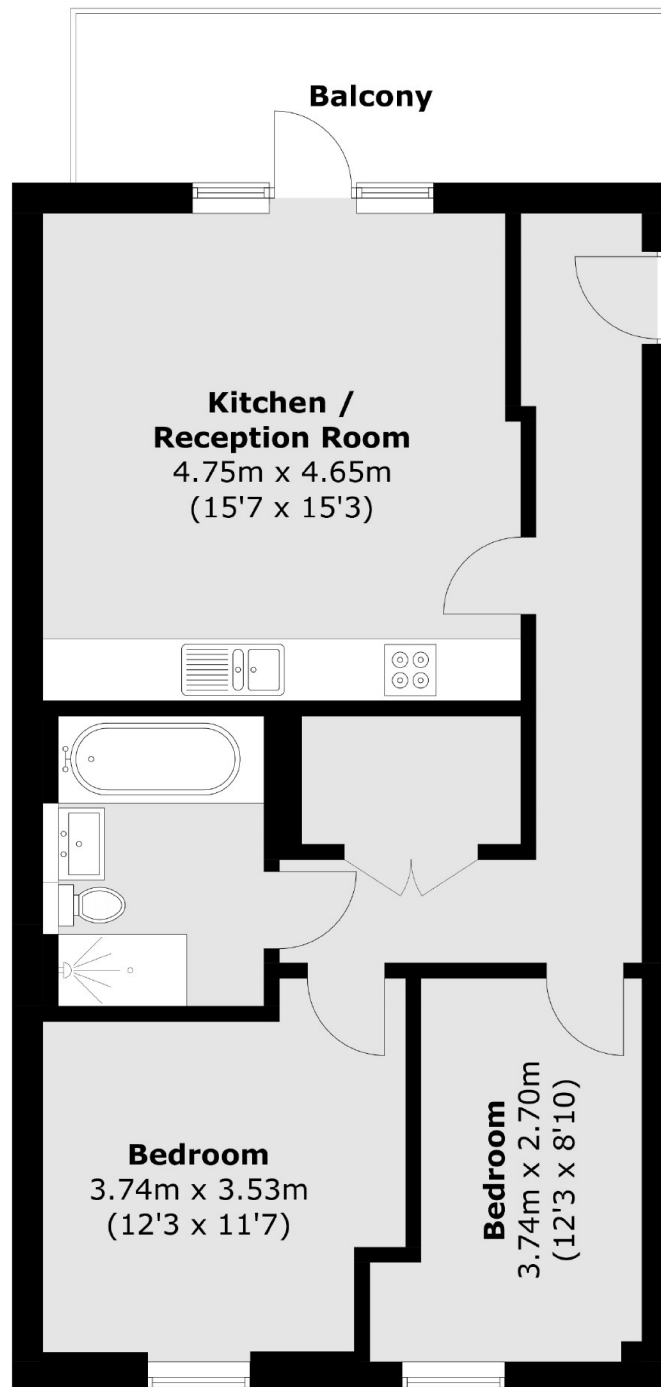
This two bedroom contemporary apartment has been finished to a high standard throughout and has an abundance of natural light. The apartment has a private balcony which overlooks the picturesque landscaped gardens.

Less than 10 minutes walk from Park Royal tube station (Piccadilly line) and under 15 minutes walk from Hanger Lane station (Central line). Lakeside Drive is served by the 226 bus route.

Features

- Two Double Bedrooms
- Stunning Communal Gardens
- Open Plan
- Ample Storage
- Private Balcony
- Lift Access

Lakeside Drive,
London, NW10



Total area (approx.): 65.5 sq. m (705.0 sq. ft)
Balcony: 9.5 sq. m (102.2 sq. ft)

Dexters

Acton
171 High Street
London
W3 6LP
Sales
020 8896 2112

Energy Rating: B. We aim to make our particulars both accurate and reliable. However they are not guaranteed; nor do they form part of an offer or contract. If you require clarification on any points then please contact us, especially if you're traveling some distance to view. Please note that appliances and heating systems have not been tested and therefore no warranties can be given as to their good working order.

 **RICS** | Regulated
Estate Agent
and Letting Agent

[dexters.co.uk](https://www.dexters.co.uk)