



Victoria Road, W3

£330,000

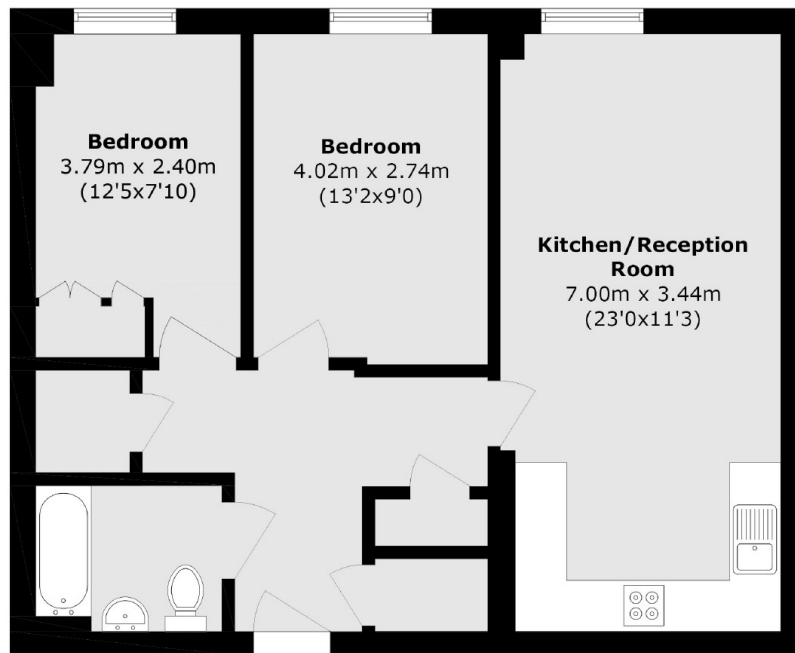
A two bedroom apartment situated on the tenth floor with just under 650 sq.ft of internal living space. The apartment has been recently modernised and selling with no onwards chain,

Situated less than 150 yds from North Acton tube station (Central line) and half a mile from Acton Main Line station (Elizabeth line).

Features

- Two Double Bedroom
- Tenth Floor
- Lift Access
- Good Condition
- Close to Tube Station
- No Onward Chain

Victoria Road,
London, W3



Total area (approx.): 61.0 sq. m (656.6 sq. ft)

Dexters

Acton
171 High Street
London
W3 6LP
Sales
020 8896 2112

Energy Rating: C. We aim to make our particulars both accurate and reliable. However they are not guaranteed; nor do they form part of an offer or contract. If you require clarification on any points then please contact us, especially if you're traveling some distance to view. Please note that appliances and heating systems have not been tested and therefore no warranties can be given as to their good working order.

 **RICS** | Regulated
Estate Agent
and Letting Agent

dexters.co.uk