



## Northfields Road, W3

£750,000

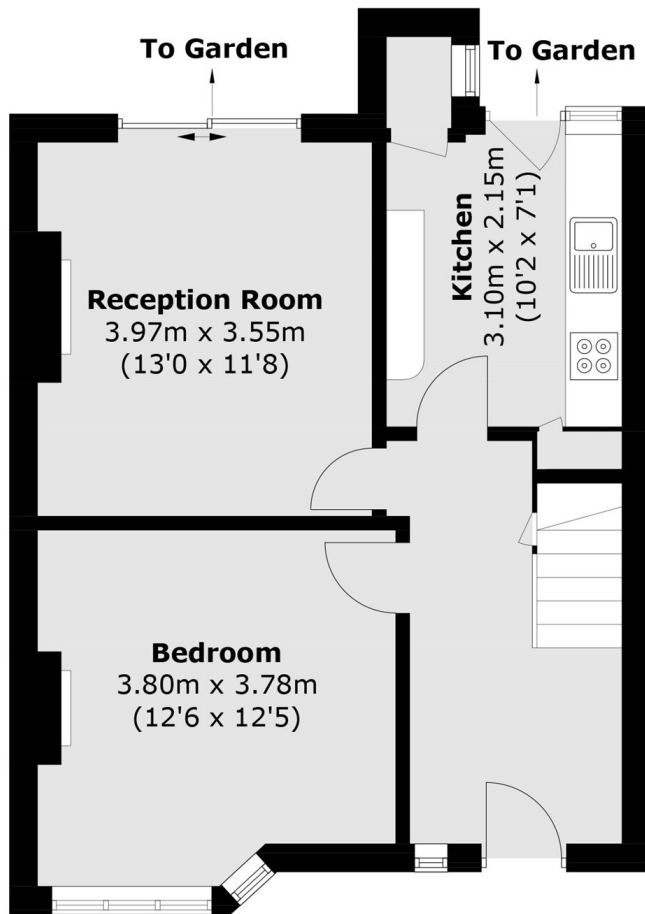
A three bedroom semi detached family home with heaps of potential to extend (STPP). The property has a large garden with a garage at the rear and views over North Acton playing fields. Northfields Road is perfect for commuting for both in and out of london and will be sold with no onwads chain.

Northfields Road is located north of North Acton playing fields and is 0.6 miles to West Acton tube station (Central line), 0.7 miles to North Acton tube (Central line) station and 0.6 miles to Acton Main line station. For the motorist the A40 offer easy access both in and out of London.

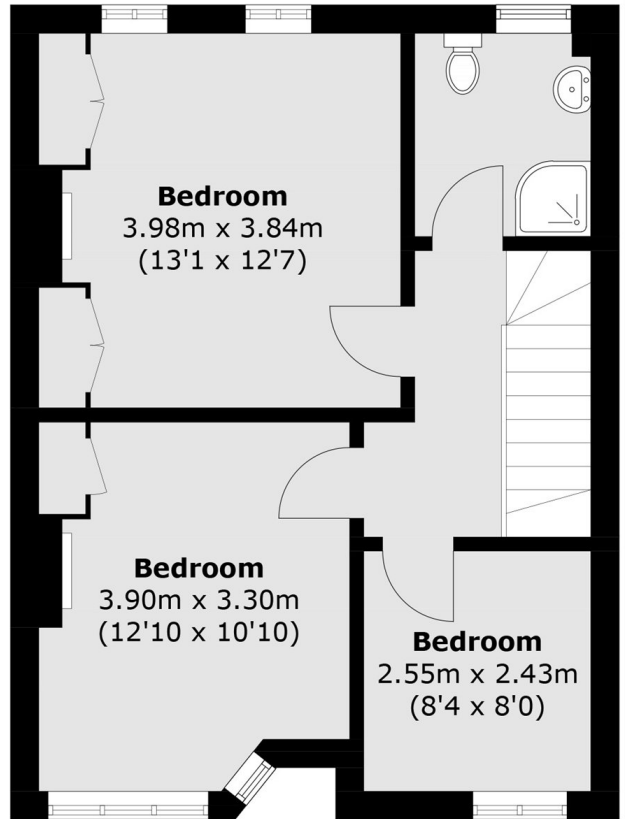
### Features

- Three Bedrooms
- Terrace House
- Rear Garage
- Overlooking Playing Fields
- Close to Transport Links
- No Onwards Chain

Northfields Road,  
London, W3



**Ground Floor**



**First Floor**

Total area (approx.): 92.5 sq. m (995.6 sq. ft)