

Lakeside Drive, NW10

£299,950

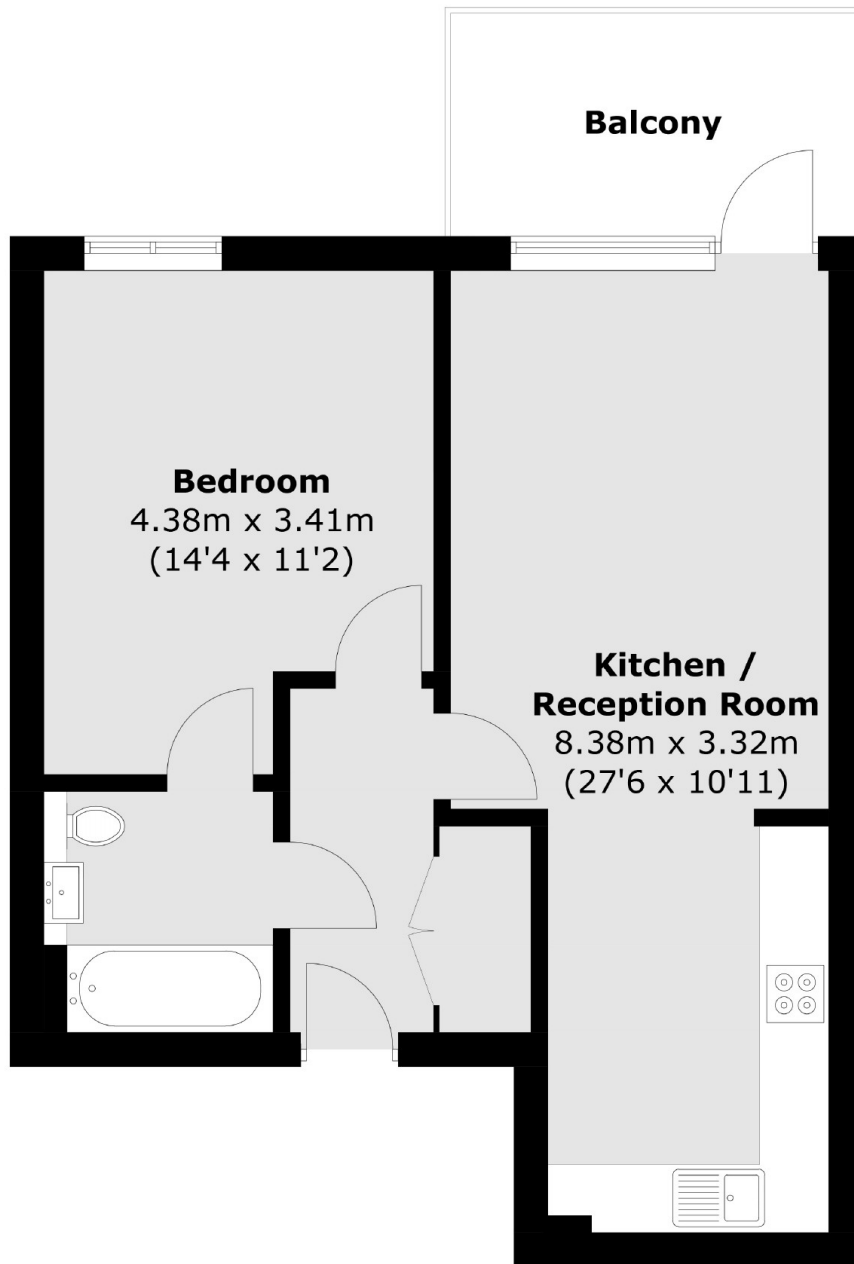
A third floor apartment which spans over 550 sq ft of living space. This one bedroom apartment has a large open plan kitchen living areas, floor to ceiling windows which allows a huge amount of light and a large balcony overlooking the lake.

Park Royal (Piccadilly line) and Hanger Lane (Central line) tube stations are both within half a mile of the building. Lakeside Drive is served by the 226 bus.

Features

Recently Built
Third Floor
Double Bedroom
Circa 550 sq.ft
Private Balcony
No Onward Chain

Lakeside Drive,
London, NW10



Total area (approx.): 50.1 sq. m (539.3 sq. ft)
Balcony area: 6.9 sq. m (74.3 sq. ft)

Dexters

Acton
171 High Street
London
W3 6LP
Sales
020 8896 2112

Energy Rating: B. We aim to make our particulars both accurate and reliable. However they are not guaranteed; nor do they form part of an offer or contract. If you require clarification on any points then please contact us, especially if you're traveling some distance to view. Please note that appliances and heating systems have not been tested and therefore no warranties can be given as to their good working order.

 **RICS** | Regulated
Estate Agent
and Letting Agent

dexters.co.uk