



East Churchfield Road, W3

£500,000

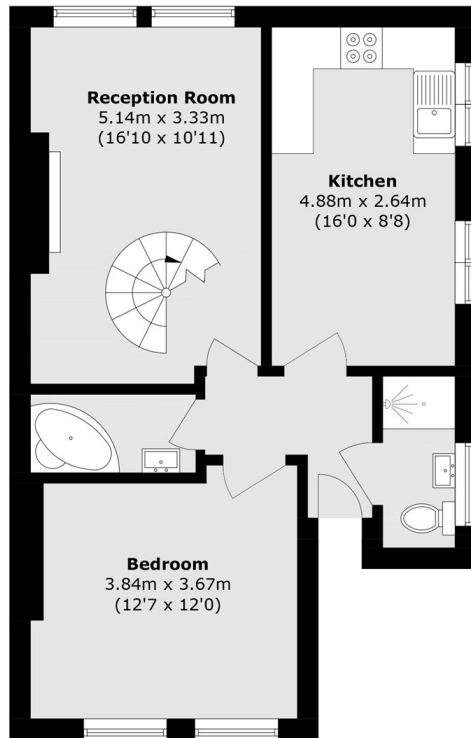
A spacious and beautifully presented split-level three-bedroom, two-bathroom apartment set within an imposing period building in the heart of Acton Central. Offering over 1,060 sq ft of versatile living space, the property blends period charm with generous proportions throughout. Additional benefits include access to well-maintained communal gardens, a share of freehold, and the advantage of being sold with no onward chain.

Just over 50 metres from Acton Central station (Overground) Acton park and the buzzing atmosphere of all the shops, bars and restaurants that Churchfield Road has to offer.

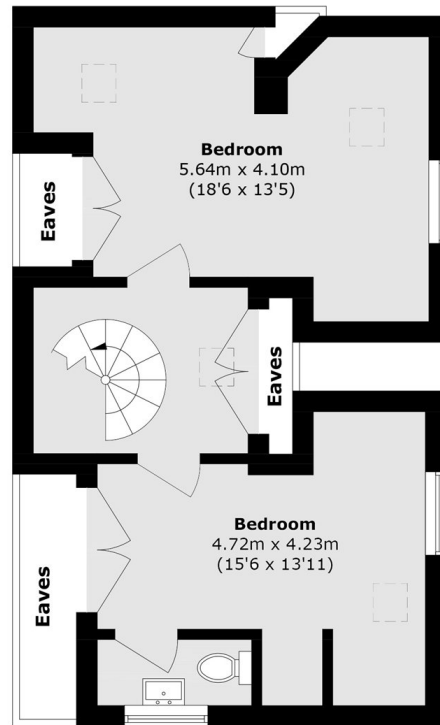
Features

- Three Bedroom
- Three Bathroom
- Split Level
- Over 1060 Square Feet
- Share of Freehold
- Shared Garden

East Churchfield Road, London, W3



Second Floor



Third Floor

Total area (approx.): 98.9 sq. m (1064.5 sq. ft)
(Excluding Eaves)