



Gloucester Road, W3

£775,000

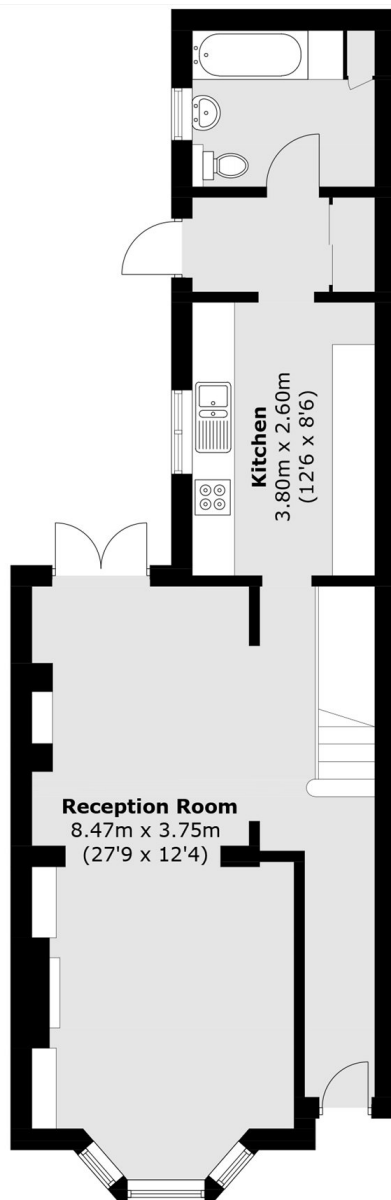
A charming mid-terraced Victorian house set over three floors, with four bedrooms, two bathrooms a spacious double reception leading out onto a south facing garden, The house is filled with period features, a flood of natural light and will be sold with no onward chain, Gloucester Road is perfect for the catchment area of Ark Primary School and North Chiswick.

Situated within the catchment of the Ofsted rated outstanding Ark Priory Primary Academy and approximately five minutes walk from Acton Central station (Overground).

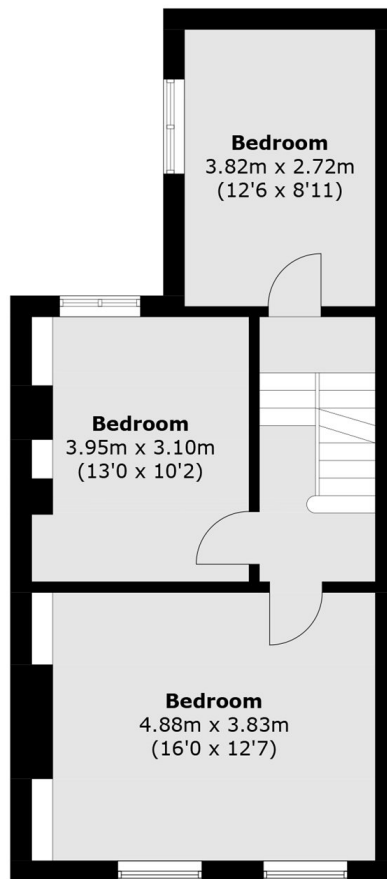
Features

- Four Double Bedrooms
- South Facing Garden
- Circa 1500 sq.ft
- Double Reception Room
- Downstairs WC
- No Onward Chain

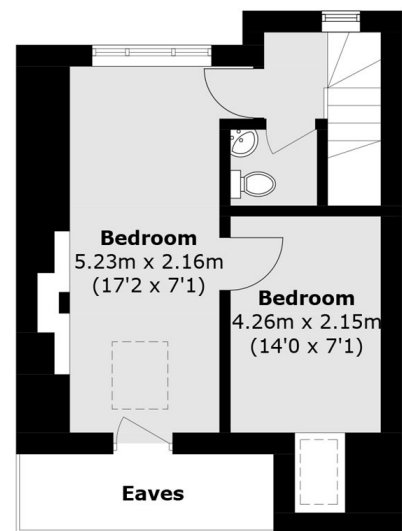
Gloucester Road,
London, W3



Ground Floor



First Floor



Second Floor

Total area (approx.): 134.5 sq. m (1,447.7 sq. ft)
(Excluding Eaves)