



## Cromwell Close, W3

### £375,000

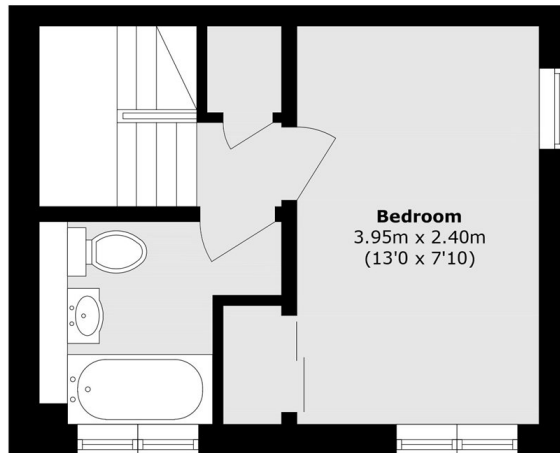
A charming one-bedroom split-level starter home, perfectly positioned within a short walk of the popular delis, shops and restaurants on Churchfield Road, as well as the green open spaces of Acton Park. Flooded with natural light throughout, the property features a separate kitchen, a well-proportioned family bathroom, and a bright living area. Other benefits include a South-facing front garden ideal for enjoying sunny days and allocated off-street parking.

Acton Central (Overground line) is just over a quarter of a mile away and Acton Main Line (Elizabeth line) is just under a mile. Both Churchfield road together with the high street supply local supermarket is also on your doorstep for easy convenience.

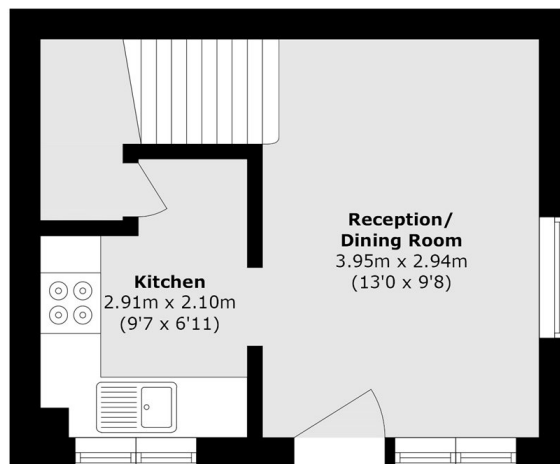
### Features

- One Bedroom
- Freehold House
- South facing Front Garden
- Acton Central
- Allocated Parking
- No onwards Chain

# Cromwell Close, London, W3



**First Floor**



**Ground Floor**

Total area (approx.): 38.8 sq. m (417.6 sq. ft)