



Heathfield Road, W3

£1,550,000

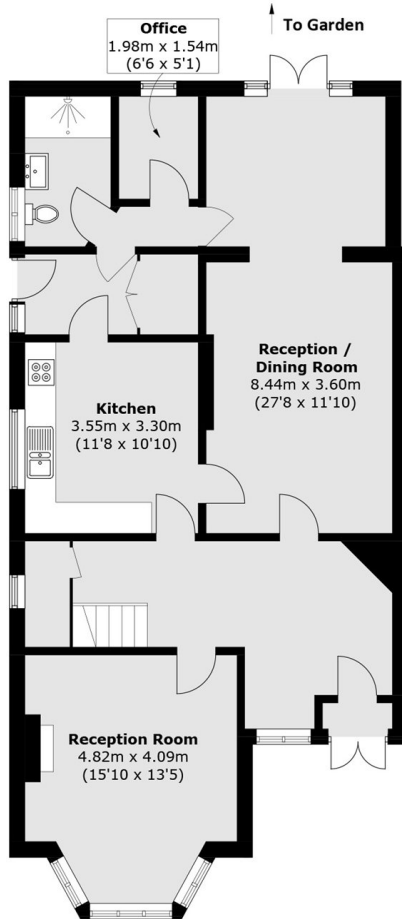
The first time to market in nearly 45 years, this is a unique opportunity to purchase a gorgeous semi detached period family home nestled within a quiet pocket of the Mill Hill conservation area. The property has six large bedrooms, two bathrooms arranged over three floors and has circa 2,300 sq.ft of internal living space. The home further benefits from a well proportioned rear garden and has potential to be extended (STPP).

Located within a five minute walk from Acton Town station (District and Piccadilly line) and just over a half mile from South Acton station (Overground line).

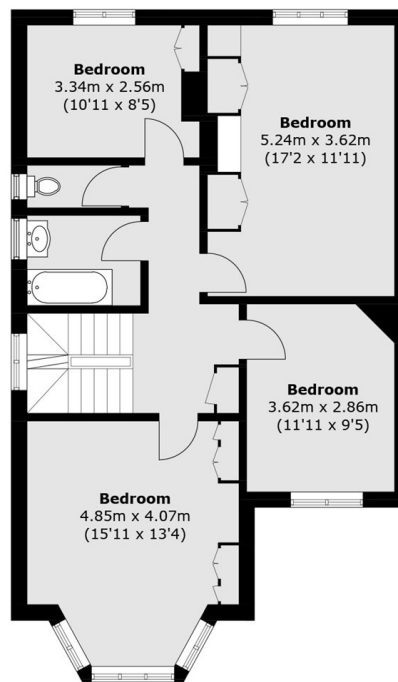
Features

- Six Bedrooms
- Two Bathrooms
- Circa 2,300 sq.ft
- Semi Detached
- No Onward Chain
- Private Garage

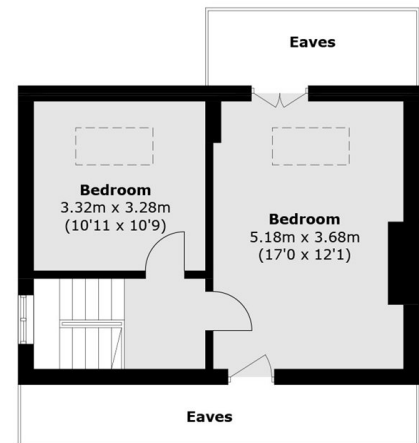
Heathfield Road, London, W3



Ground Floor



First Floor



Second Floor

Total area (approx.): 211.4 sq. m (2275.4 sq. ft)
(Excluding Eaves)