



Bromyard Avenue, W3

£300,000

A one bedroom ground floor apartment situated within the popular Bromyard House building, a Berkeley Homes development. The flat measures circa 470 sq.ft and comes with the right to park on site

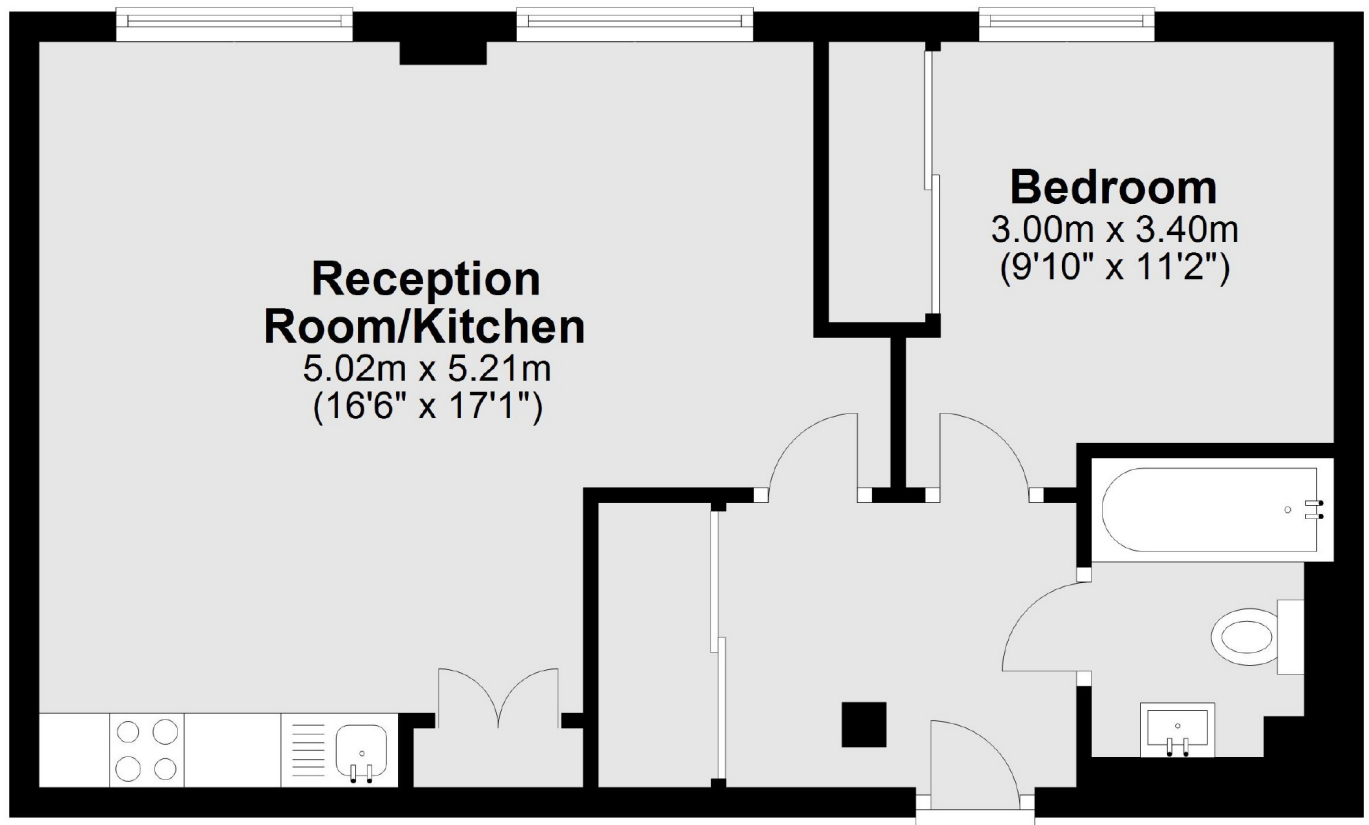
Situated within close proximity to two health and fitness clubs and several parks. East Acton tube (Central station), Acton Central (Overground) and Acton Main Line (forthcoming Elizabeth line) stations are all within easy reach.

Features

- On Site Parking
- Ground Floor
- Long Lease
- Communal Garden Space
- 24 Hour Concierge Service
- Gated Development

Bromyard Avenue,
London, W3

Ground Floor



Total area: approx. 43.7 sq. metres (470.6 sq. feet)