



## Lakeside Drive, NW10

### £470,000

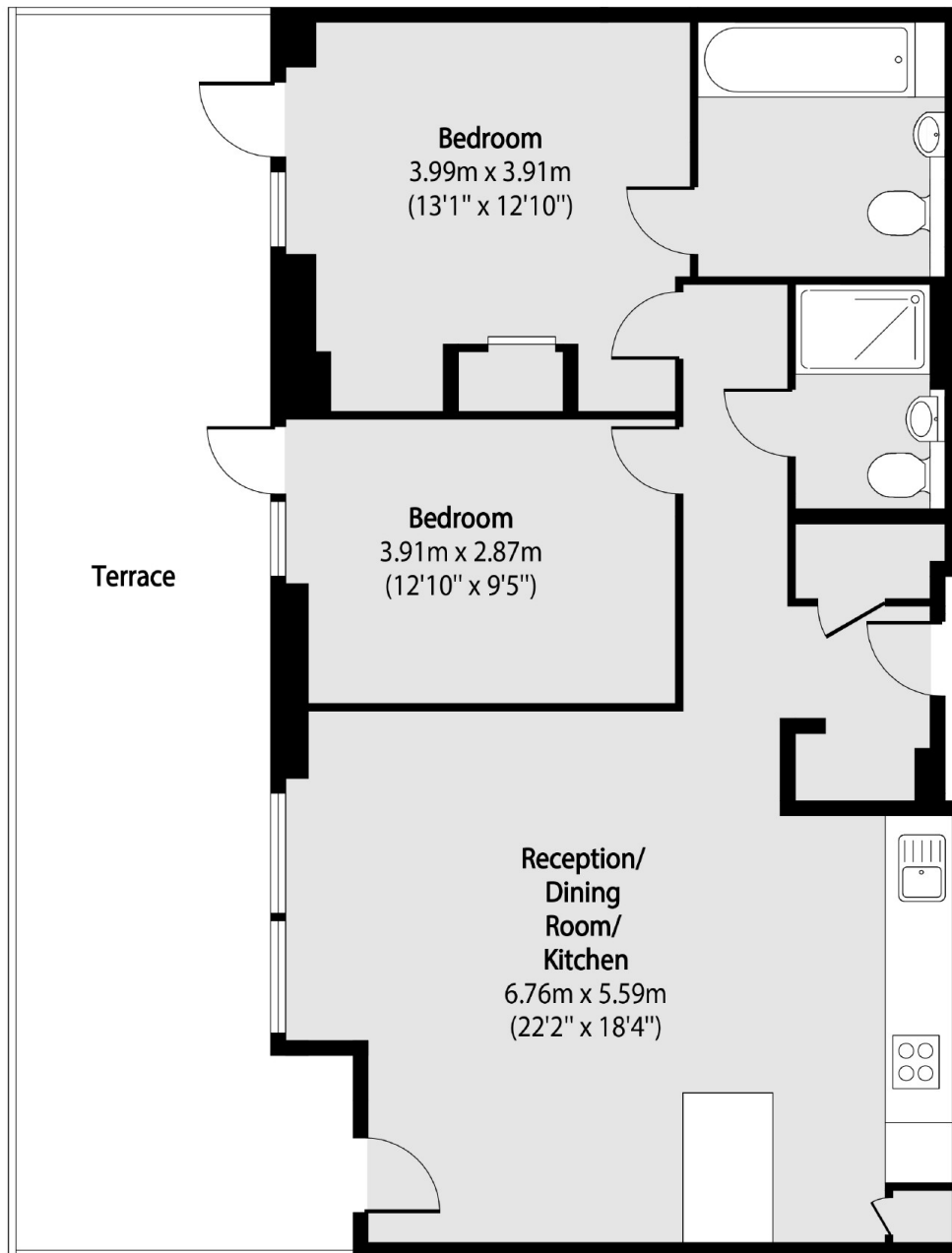
This impressive, airy, and bright 2 bedroom, 2 bathroom ground floor apartment offers approximately 900 sqft of internal living space in the exclusive, sought after Bodiam Court development . It is one of only four such apartments available in the entire development with a private entrance, a private terrace and parking sold with no onward chain

Hanger Lane (Central line) and Park Royal Tube Stations are just over half a mile away and Bodiam Court is served by the 226 bus route.

### Features

- Two Double Bedrooms
- Two Bathrooms
- No Onward Chain
- Underground Parking
- Private Terrace
- Circa 900 sq.ft

Lakeside Drive,  
London, NW10



Total area (approx): 81.29 sq m (875 sq. ft)

Terrace total area (approx): 34.18 sq m (368 sq. ft)

**Dexters**

Acton  
171 High Street  
London  
W3 6LP  
Sales  
020 8896 2112

Energy Rating: B. We aim to make our particulars both accurate and reliable. However they are not guaranteed; nor do they form part of an offer or contract. If you require clarification on any points then please contact us, especially if you're traveling some distance to view. Please note that appliances and heating systems have not been tested and therefore no warranties can be given as to their good working order.

 **RICS** | Regulated  
Estate Agent  
and Letting Agent

[dexters.co.uk](http://dexters.co.uk)