



Greenview Close, W3

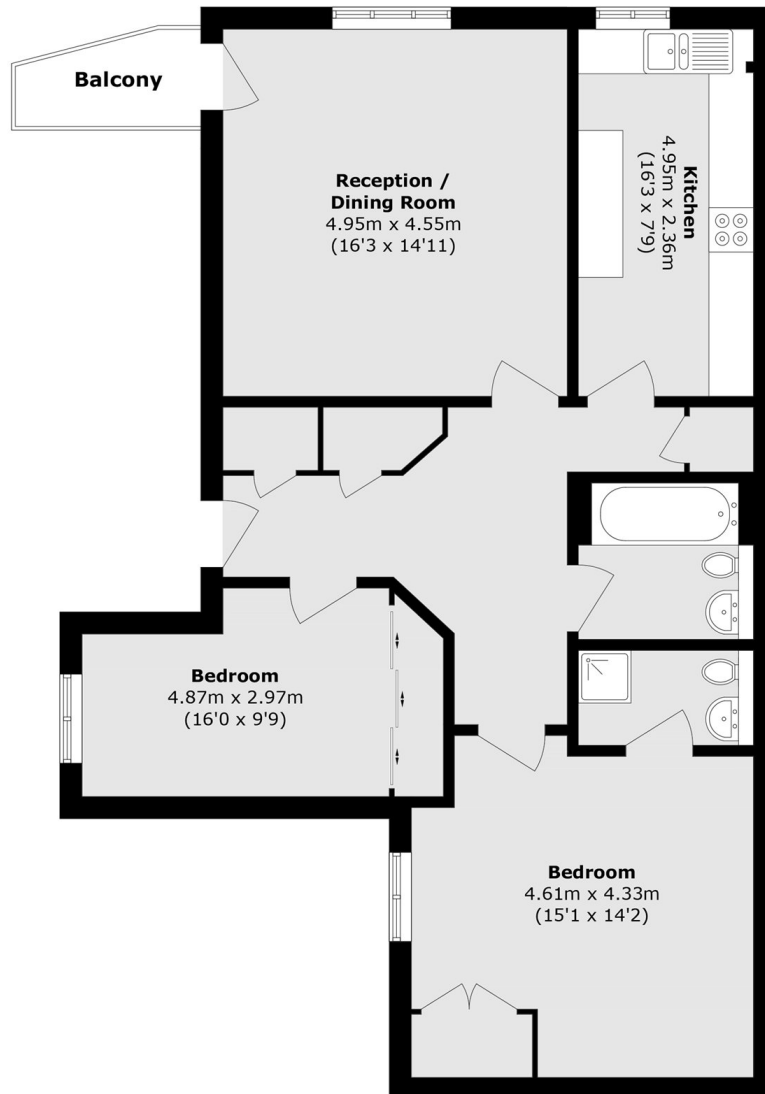
£550,000

Located just off Acton Park, This beautifully refurbished two-bedroom flat is positioned on the first floor of a modern purpose-built block, offering stylish living in a peaceful setting. The property boasts nearly a 1000sqft of contemporary living space offering a large separate kitchen, two double bedrooms, en-suite to the master and a family bathroom, larger reception room with private balcony a generous entrance hall, providing an excellent sense of space and flow. Additional benefits include two parking spaces, visitors' parking, and a secure bicycle shed.

Features

- Acton Park
- Circa 1000sqft of living space
- Two parking spaces
- Private balcony
- Two double bedrooms
- Two Bathrooms

Greenview Close, London, W3



Total area (approx.): 95.6 sq. m (1029.0 sq. ft)
Balcony area (approx.): 2.7 sq. m (29.0 sq. ft)