



Vyner Road, W3

£1,200,000

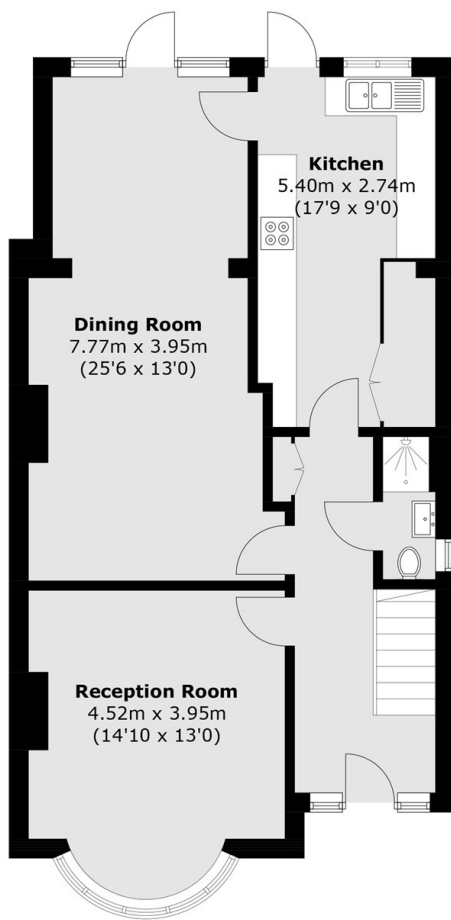
A spacious semi-detached five bedroom family home on a quiet residential road within the sought after Goldsmith's Estate. The property has off street parking for multiple cars and a large garden with a separate annex/studio at the rear. The property offers any future buyer an opportunity to extend further or already utilise the generous space making it the perfect family home.

Features

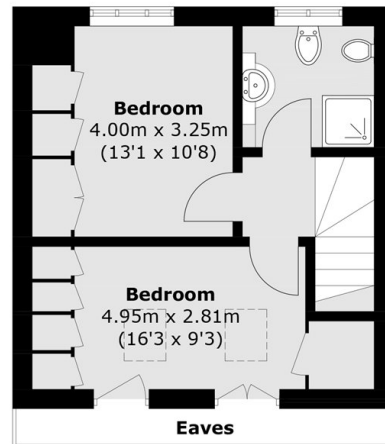
- Five Bedrooms
- Three Bathrooms
- Off-Street Parking
- Annex/Studio
- Semi-Detached
- Large Garden

Vyner Road is half a mile from Acton Central (Overground), Acton Main Line (Elizabeth Line), and the amenities of Churchfield Road.

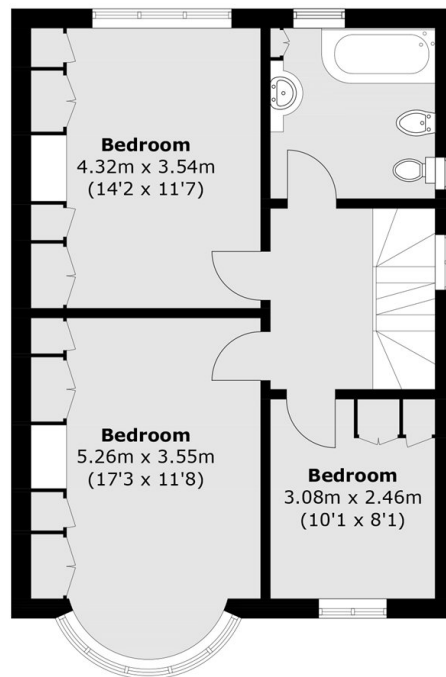
Vyner Road, London, W3



Ground Floor



Second Floor



First Floor

Total area (approx.): 159.2 sq. m (1,713.6 sq. ft)
(Excluding Eaves)