



## Rosemont Road, W3

### £550,000

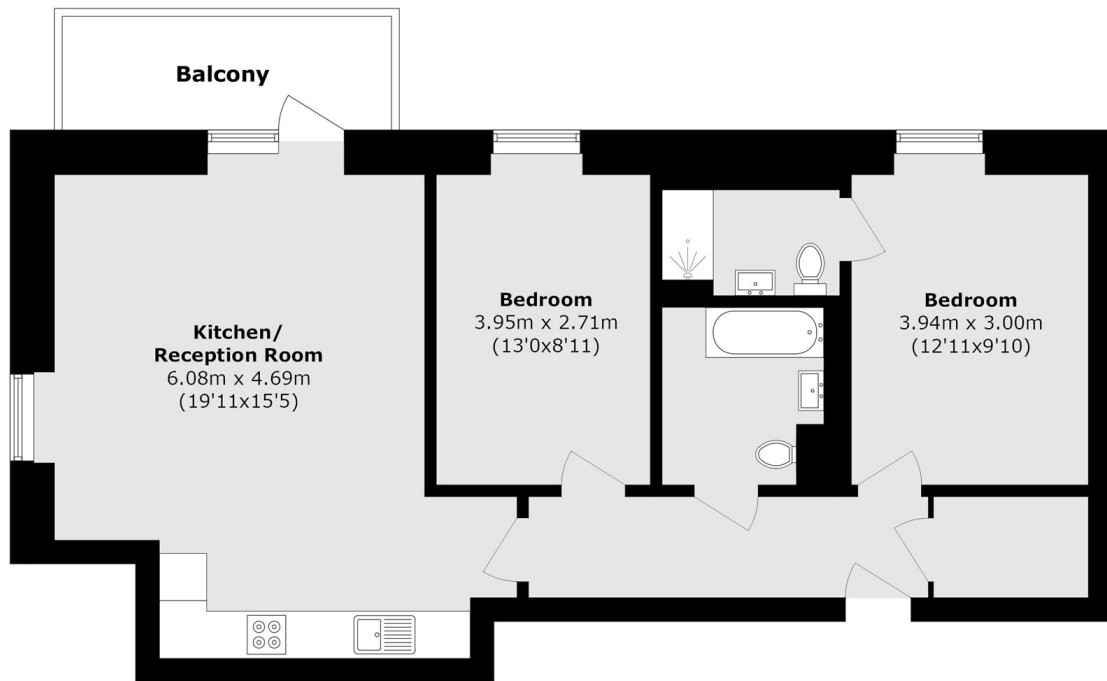
A bright, modern fourth-floor apartment with access to a communal roof terrace, set on the highly sought-after Rosemont Road. Offering 800 sq ft of well-designed lateral living space with views over Springfield Park, the property features two double bedrooms, including a principal bedroom with en-suite, a contemporary family bathroom, and a spacious open-plan kitchen and living area. Further benefits include secure bike storage and allocated underground parking.

Just over half a mile from Acton Main Line (Elizabeth line), West Acton (Central line) and Ealing Common (District and Piccadilly lines) tube stations.

### Features

- Two Double Bedrooms
- Shared Roof Terrace
- Private Balcony
- Gated Secure Parking
- Long Lease
- Elizabeth Line

# Rosemont Road, London, W3



Total area (approx.): 73.6 sq. m (792.2 sq. ft)  
(Excluding Balcony)  
Balcony area (approx.): 6.0 sq. m (64.5 sq. ft)

## Dexters

Acton  
171 High Street  
London  
W3 6LP  
Sales  
020 8896 2112

Energy Rating: B. We aim to make our particulars both accurate and reliable. However they are not guaranteed; nor do they form part of an offer or contract. If you require clarification on any points then please contact us, especially if you're traveling some distance to view. Please note that appliances and heating systems have not been tested and therefore no warranties can be given as to their good working order.

 **RICS** | Regulated  
Estate Agent  
and Letting Agent

[dexters.co.uk](https://www.dexters.co.uk)