



Eastbourne Avenue, W3

£1,003 Per week

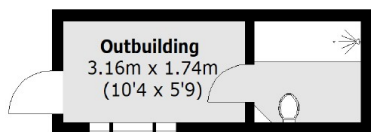
This beautiful four bedroom house would be suitable for a family who want lots of space and comfort. The property has been recently renovated and comes with a private garden and two bathrooms.

Eastbourne Avenue is situated within the amenities of Acton and Churchfield Road including the transport links at Acton Central, Acton Mainline and North Acton Central line stations and the A40 motorway into and out of London.

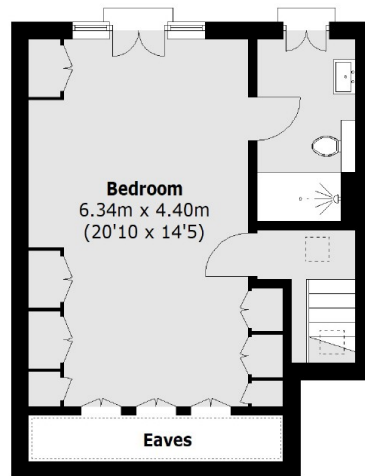
Features

- Family Home
- Four Bedrooms
- Two Bathrooms
- Private Garden
- Recently Renovated
- Spacious Reception Room

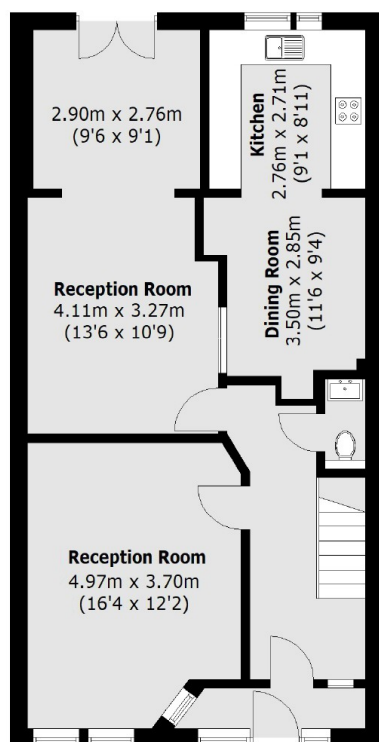
Eastbourne Avenue, London, W3



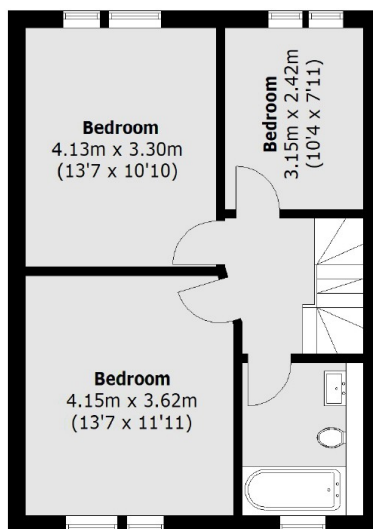
(Not Shown In Actual
Location / Orientation)



Second Floor



Ground Floor



First Floor

Total area (approx.): 155.4 sq. m (1,672.7 sq. ft)
(Excluding Eaves)
Outbuilding area 9.0 sq. m (96.9 sq. ft)