



## Warple Way, W3

£300,000

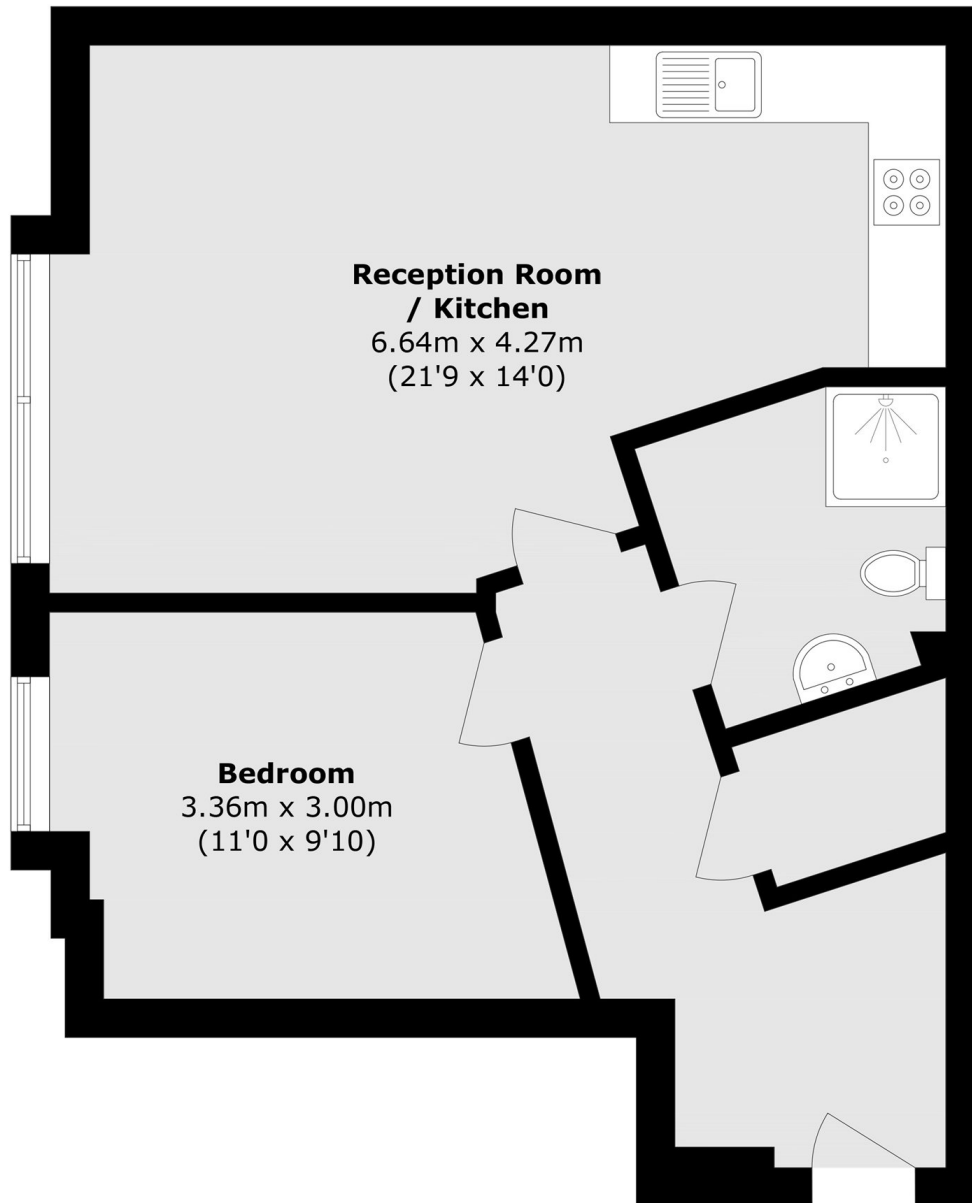
A one bedroom apartment in an imposing period building Situated on the borders of Chiswick and Askew Village. The property has open plan living perfect for entertaining and will be sold with no onwards chain.

Less than half a mile from Acton Central station (Overground), and within a mile of Acton High Street as well as the central line underground.

### Features

One Double Bedroom  
Ground Floor Apartment  
Victoria Conversion  
570 Square Foot  
Long Lease  
Chain Free

Warple Way,  
London, W3



Total area (approx.): 53.1 sq. m (571.5 sq. ft)

**Dexters**

Acton  
171 High Street  
London  
W3 6LP  
Sales  
020 8896 2112

Energy Rating: C. We aim to make our particulars both accurate and reliable. However they are not guaranteed; nor do they form part of an offer or contract. If you require clarification on any points then please contact us, especially if you're traveling some distance to view. Please note that appliances and heating systems have not been tested and therefore no warranties can be given as to their good working order.

 **RICS** | Regulated  
Estate Agent  
and Letting Agent

[dexters.co.uk](https://www.dexters.co.uk)