



Copenhagen Gardens, W4 £925,000

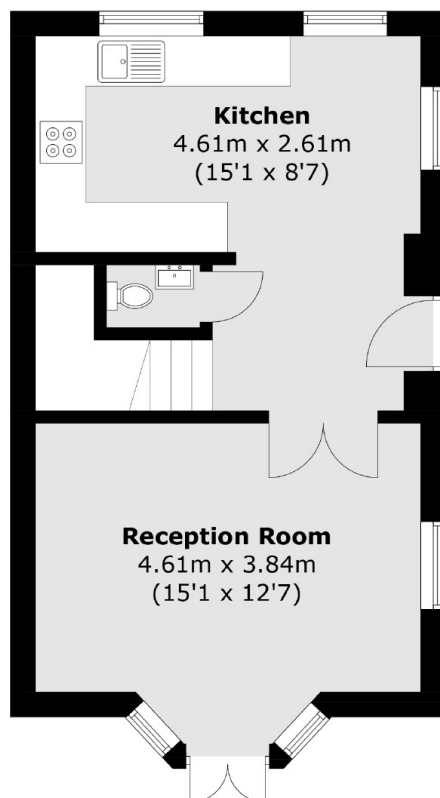
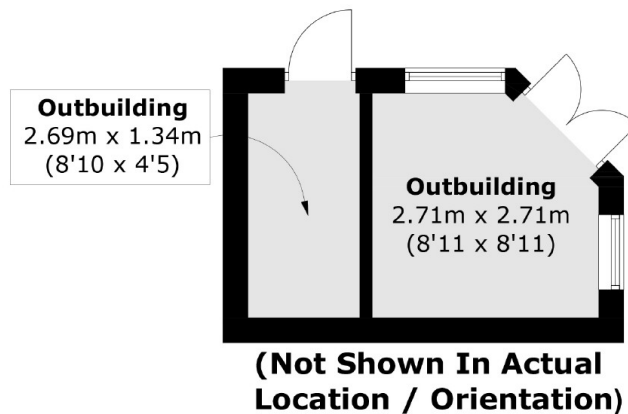
A bright and charming two double bedroom, double fronted mews house within this popular gated development. The property has the potential to be extended into the loft (subject to the usual planning consents), allocated off-street parking, large separate kitchen, west-facing garden and external studio.

Copenhagen Gardens is a gated development located in the northern edge of Chiswick. The property is within a mile of three train stations - South Acton (Overground), Turnham Green (District & Piccadilly) and Chiswick Park (District). The many amenities of Chiswick High Road are also close by.

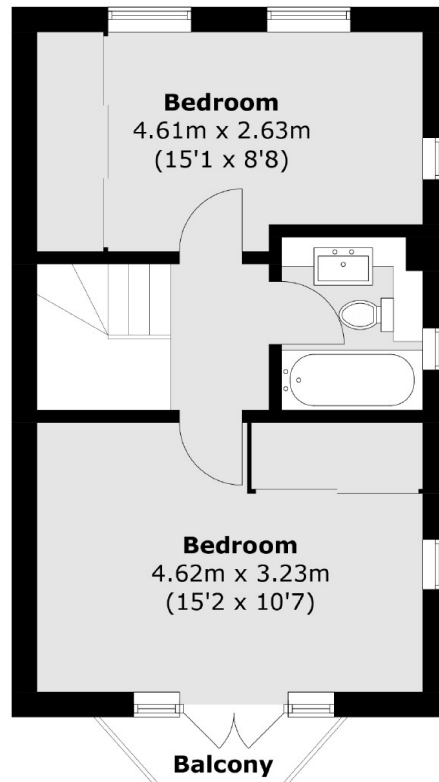
Features

- Two Double Bedrooms
- Double Fronted
- Gated Development
- Allocated Off-Street Parking
- External Studio
- Potential To Extended (STPP)

Copenhagen Gardens, London, W4



Ground Floor



First Floor

Approx Internal Area: 74.0 sq. m (796.5 sq. ft)
Outbuilding: 10.6 sq. m (114.1 sq. ft)
Balcony: 1.7 sq. m (18.3 sq. ft)