



Walpole Gardens, W4

£360,000

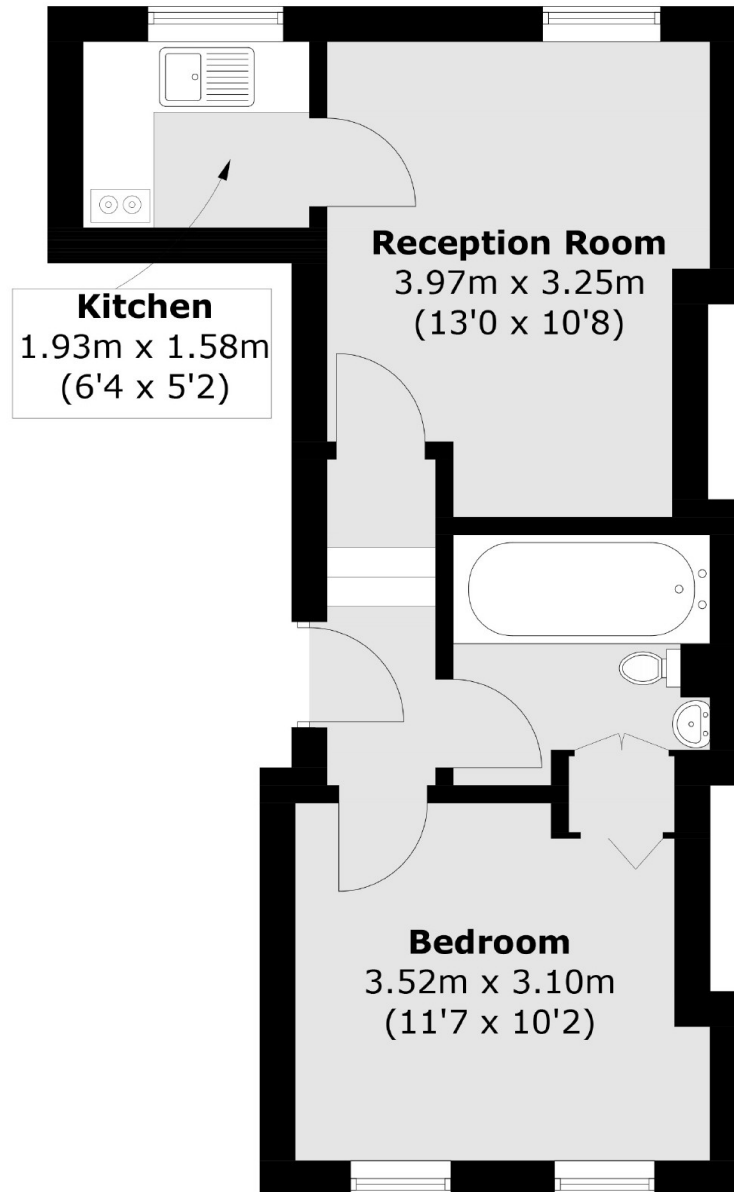
A well presented first floor, one bedroom conversion within a handsome Victorian building. With share of freehold and offered with no onward chain.

Walpole Gardens is a tree-lined residential road, nestled in the heart of central Chiswick. It is well located for the many amenities of Chiswick High Road and within walking distance of Gunnersbury, Chiswick Park and Turnham Green stations.

Features

- Victorian Conversion
- One Double Bedroom
- First Floor
- Share Of Freehold
- Central Location
- No Onward Chain

Walpole Gardens, London, W4



First Floor

Total area (approx.): 33.7 sq. m (362.7 sq. ft)

Dexters

Chiswick
388 Chiswick High Road
London
W4 5TF
Sales
020 8995 4321

Energy Rating: C. We aim to make our particulars both accurate and reliable. However they are not guaranteed; nor do they form part of an offer or contract. If you require clarification on any points then please contact us, especially if you're traveling some distance to view. Please note that appliances and heating systems have not been tested and therefore no warranties can be given as to their good working order.

 **RICS** | Regulated
Estate Agent
and Letting Agent

[dexters.co.uk](https://www.dexters.co.uk)