

## Pottery Road, TW8

### £500,000

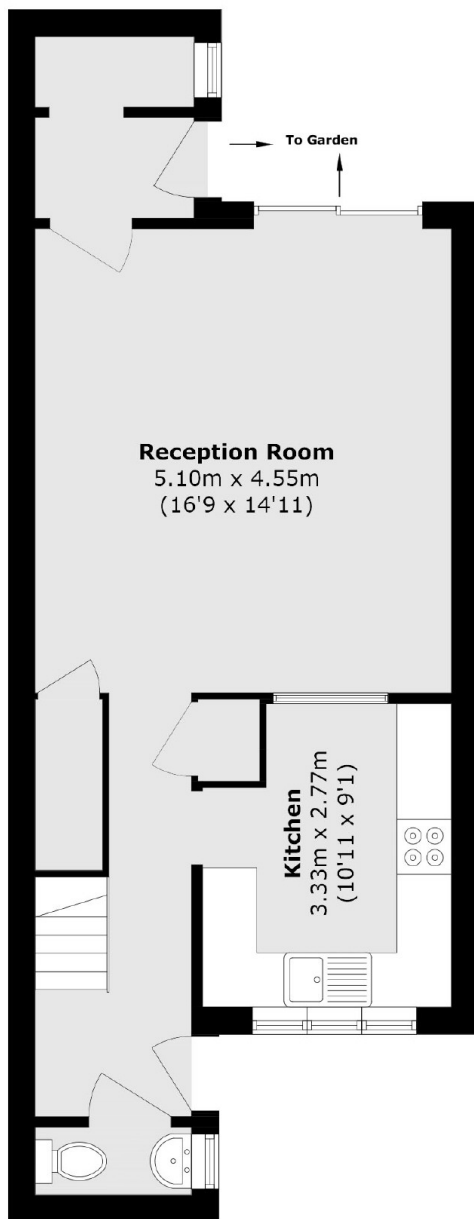
\* Offers In Excess of £500,000\* Pottery Road is situated close to Brentford High Street and within walking distance to Brentford train station. This three bedroom home offers an abundance of living space with a downstairs cloakroom, spacious kitchen and a light and airy open plan lounge-diner. Upstairs you have three double bedrooms serviced by a family bathroom. The property also offers direct outside space which is a private rear garden split between astro turf and a large patio area. The property also offers plenty of storage throughout and the River Thames is a stone throw away.

Pottery Road is situated of Brentford High Street which gives great access to Kew, Chiswick, Ealing, Richmond, Kew. Located within easy reach of bus connections, A4 / M4 and well-regarded schools. In addition, Brentford, Kew Bridge & Kew Gardens Stations are within close proximity. Surrounded by green spaces of Thames Path, Watermans Park & Royal Botanical Gardens of Kew. Furthermore, the area falls within the catchment of Outstanding & Good Ofsted rated schools as well as sought after top rated grammar schools

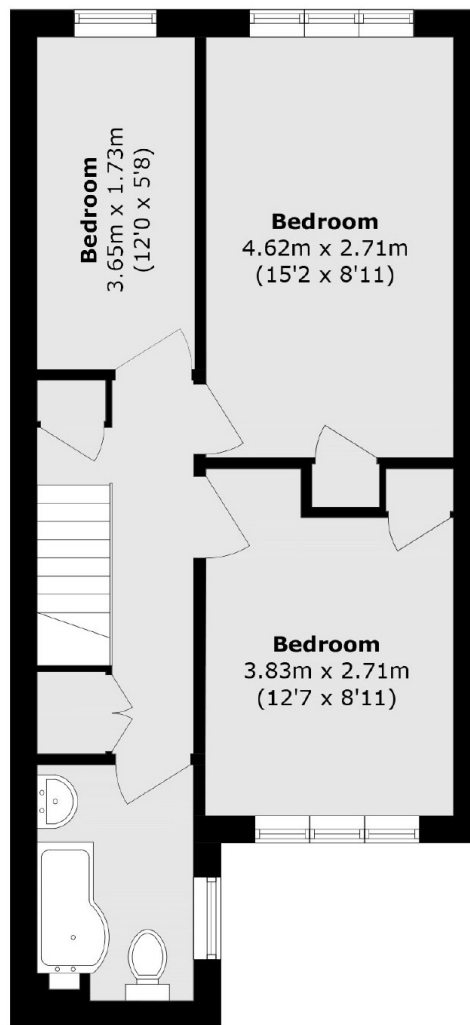
### Features

- Freehold
- Three bedrooms
- Private garden
- Close to River Thames
- Plenty of Storage
- Gas Central Heating

# Pottery Road, Brentford, TW8



**Ground Floor**



**First Floor**

Total area (approx.): 88.5 sq. m (952.6 sq. ft)