



Chiswick High Road, W4

£600 Per week

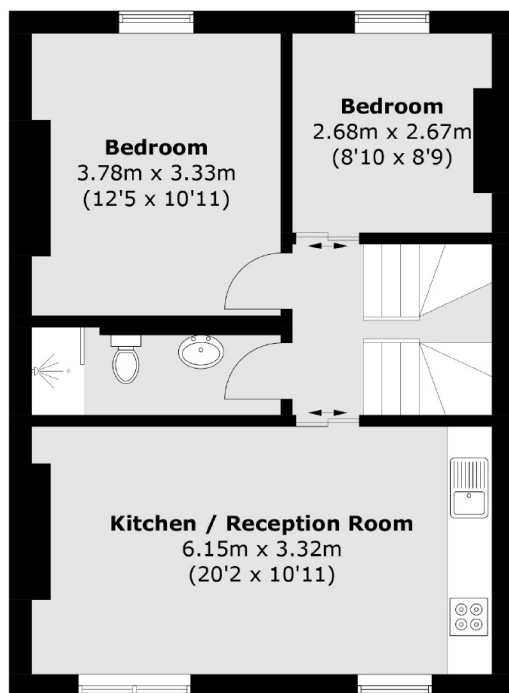
An excellently refurbished three bedroom period build maisonette. The property offers a large open plan kitchen/living area on the first floor of the property along with two bedrooms and a bathroom. Leading up a stunning feature staircase, the second floor offers a master bedroom en-suite.

Located on Chiswick High Road within half a mile of both Gunnersbury underground and Kew Bridge stations offering excellent access into London. The property is also close to the pubs, restaurants and cafés along Chiswick High Road.

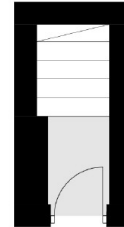
Features

- Period Maisonette
- Excellent Condition
- Three Bedrooms
- Two Bathrooms
- Close To Transport
- Split Level

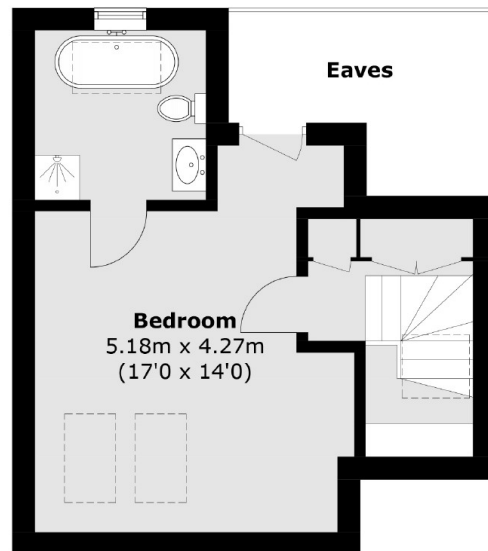
Chiswick High Road,
London, W4



First Floor



Ground Floor



Second Floor

Total area (approx.): 85.7 sq. m (922.4 sq. ft)
(Excluding Eaves)