



John Bull Place, W4

£830 Per week

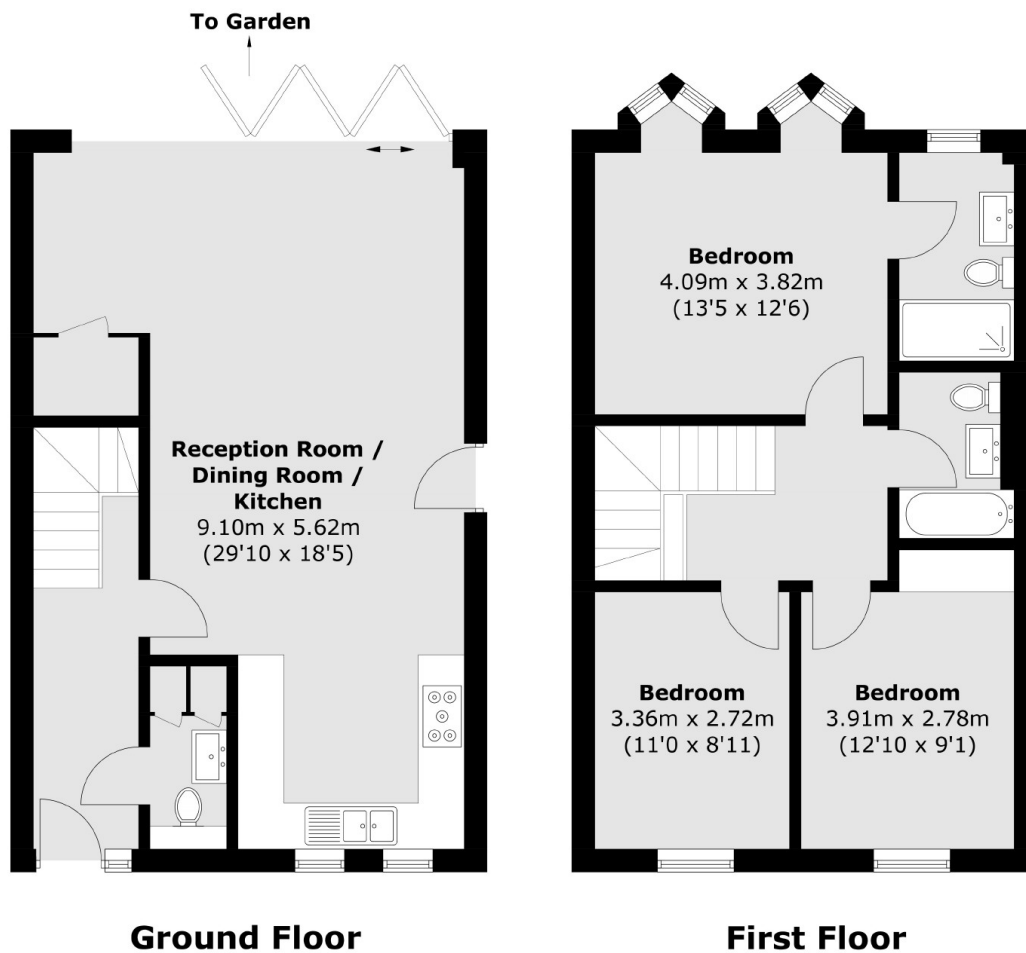
This beautifully presented home with amazing features. The ground floor features an open-plan reception room with a fully integrated kitchen and access to a private garden. The upper floor includes three double bedrooms with built-in storage and two modern bathrooms, one of which is en-suite.

John Bull Place is conveniently located near Gunnersbury Station and the local amenities of Chiswick High Road, this property is available furnished or unfurnished and ready for immediate occupancy.

Features

- New Build House
- Three Double Bedrooms
- Great Location
- Bike Storage
- Off Street Parking
- Open Plan

John Bull Place, London, W4



Total area (approx.): 102.8 sq. m (1106.6 sq. ft)

Dexters

Chiswick
388 Chiswick High Road
London
W4 5TF
Lettings
020 8995 5439

Energy Rating: C. We aim to make our particulars both accurate and reliable. However they are not guaranteed; nor do they form part of an offer or contract. If you require clarification on any points then please contact us, especially if you're traveling some distance to view. Please note that appliances and heating systems have not been tested and therefore no warranties can be given as to their good working order.

 **RICS** | Regulated
Estate Agent
and Letting Agent

[dexters.co.uk](https://www.dexters.co.uk)