



Montgomery Road, W4

£575,000

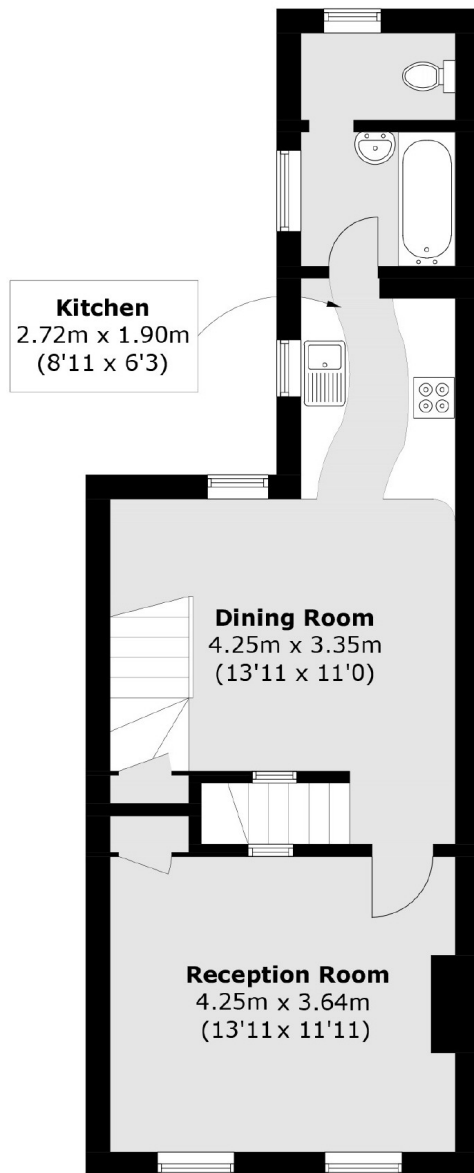
A well-presented one/two bedroom split-level conversion flat located on this tree-lined road. The property is offered with no onward chain and benefits from a large, private south facing garden.

Montgomery Road is located within close walking distance of Chiswick Park (District) and South Acton (Overground) underground stations as well as the many bars, restaurants, cafés and shops of Chiswick High Road.

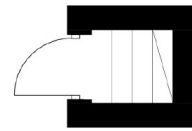
Features

- One/Two Bedrooms
- Split-Level
- Conversion
- Private South-Facing Garden
- Close To Transport
- No Onward Chain

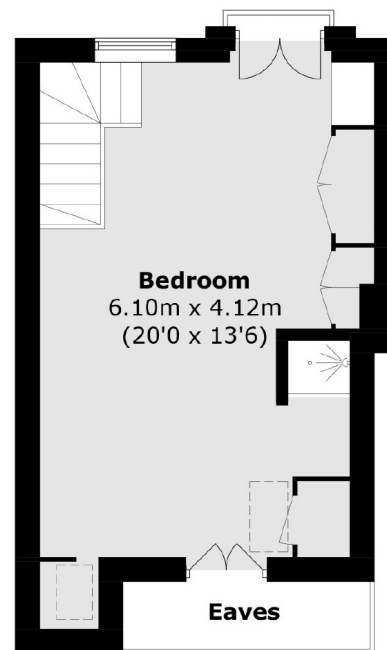
Montgomery Road,
London, W4



First Floor



Ground Floor



Second Floor

Total area (approx.): 70.4 sq. m (757.7 sq. ft)
(Excluding Eaves)

Dexters

Chiswick
388 Chiswick High Road
London
W4 5TF
Sales
020 8995 4321

Energy Rating: . We aim to make our particulars both accurate and reliable. However they are not guaranteed; nor do they form part of an offer or contract. If you require clarification on any points then please contact us, especially if you're traveling some distance to view. Please note that appliances and heating systems have not been tested and therefore no warranties can be given as to their good working order.

 **RICS** | Regulated
Estate Agent
and Letting Agent

dexters.co.uk