



## Albany Court, W4

£475,000

A new build riverside apartment that offers a private balcony. The property is a stone throw away from the River Thames and is close to local amenities, riverside pubs and transport links into London and out West. The property is offered with no onward chain.

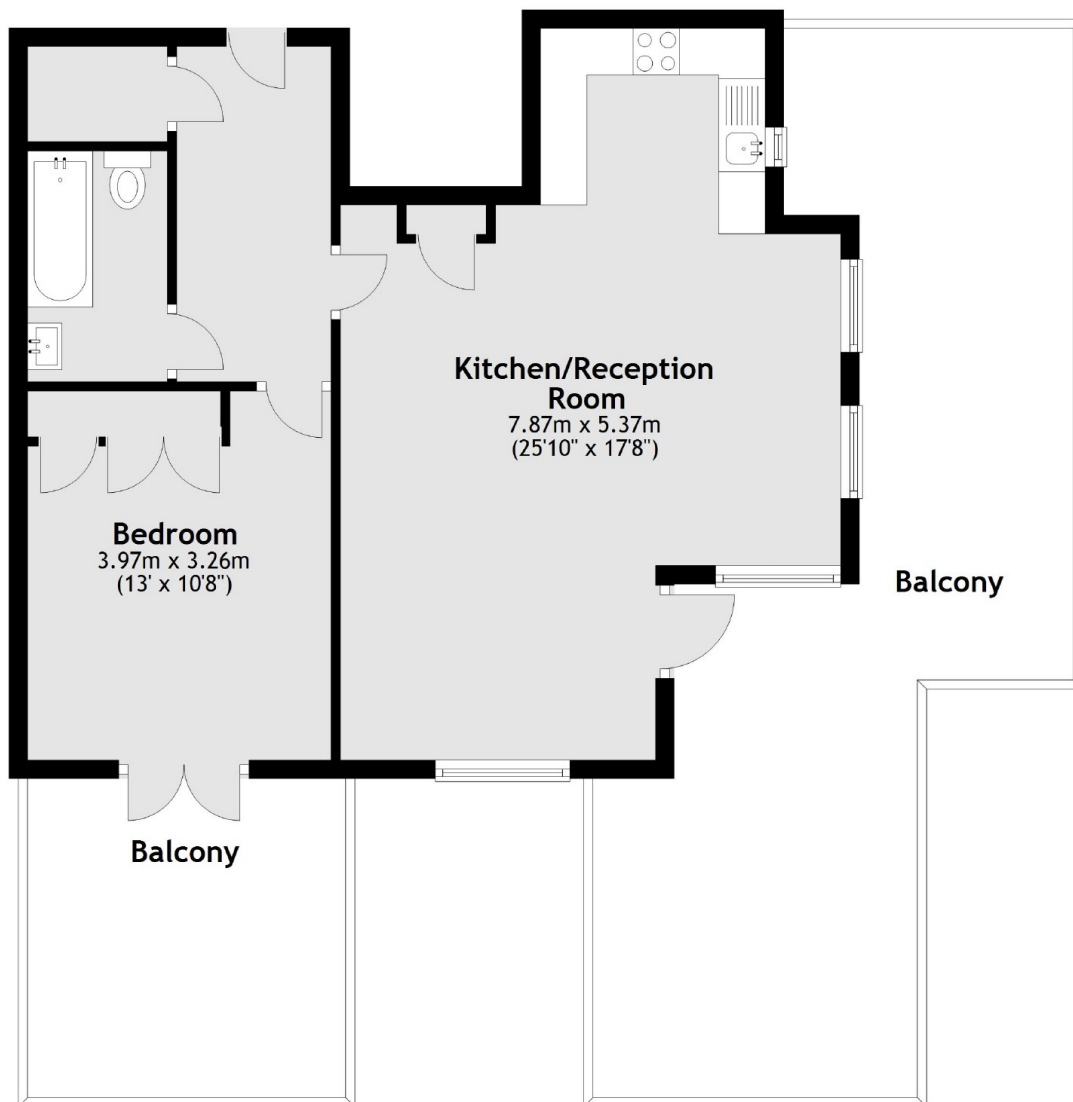
Located right next to the River Thames, a very short walk to Kew Bridge mainline station and within half a mile of Kew Green, Strand on the Green and Kew Gardens.

### Features

- No Onward Chain
- Riverside Location
- Near Local Shops / Transport
- New Build Apartment
- Private Balcony
- Option Of Parking

# Albany Court, London, W4

## Ground Floor



Main area: Approx. 57.8 sq. metres (622.6 sq. feet)  
Plus balconies, approx. 47.7 sq. metres (513.6 sq. feet)

# Dexters

Chiswick  
388 Chiswick High Road  
London  
W4 5TF  
Sales  
020 8995 4321

Energy Rating: C. We aim to make our particulars both accurate and reliable. However they are not guaranteed; nor do they form part of an offer or contract. If you require clarification on any points then please contact us, especially if you're traveling some distance to view. Please note that appliances and heating systems have not been tested and therefore no warranties can be given as to their good working order.

 **RICS** | Regulated  
Estate Agent  
and Letting Agent

[dexters.co.uk](http://dexters.co.uk)