



High Street, TW8

£550,000

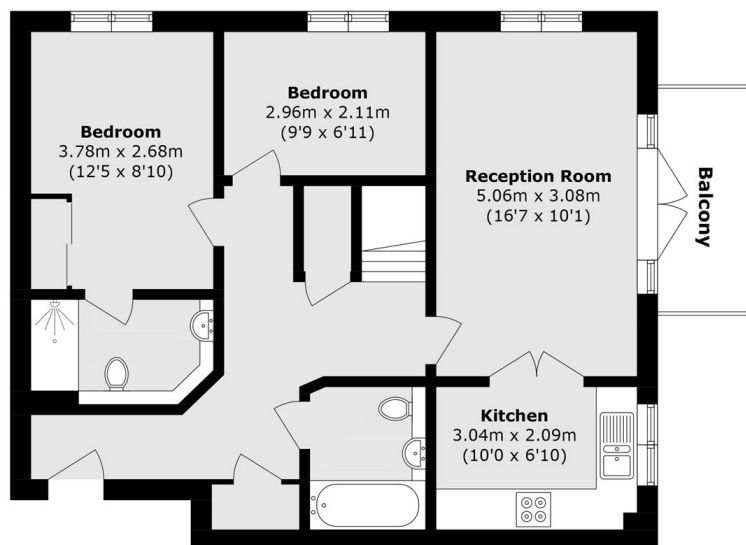
This three bedroom, three bathroom split-level apartment overlooks Brentford Lock and offers exceptional views of the River Brent and its historic locks. Providing well over 900 sq/ft of living space, the property also benefits from two allocated parking spaces and no onward chain.

Dorey House is a gated development with a wide selection of cafés, restaurants and local amenities close by. There is also great road access into neighbouring towns and the A4 /M4 for motorists.

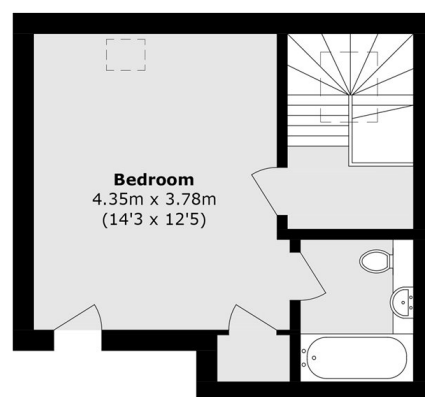
Features

- Three Bedrooms
- Three Bathrooms
- River Views
- Two Allocated Parking Spaces
- Long Lease
- No Onward Chain

High Street, Brentford, TW8



Third Floor



Fourth Floor

Total area (approx.): 89.4 sq. m (962.3 sq. ft)
Balcony area (approx.): 4.3 sq. m (46.2 sq. ft)