



Chiswick High Road, W4

£530 Per week

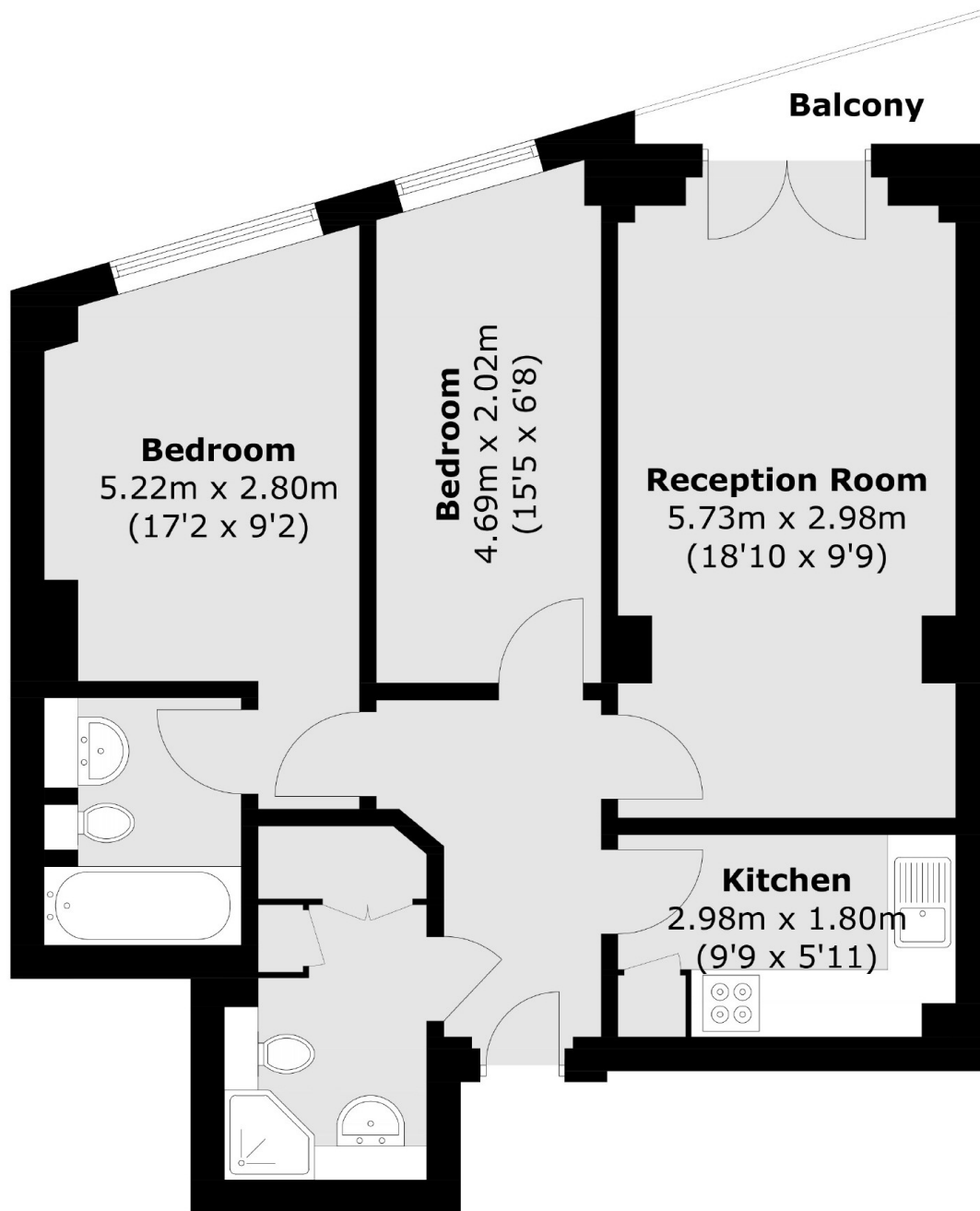
A modern apartment within a purpose-built block with two double bedrooms, two bathrooms and a private balcony overlooking the Gunnersbury Triangle Nature Reserve.

This property is situated in the heart of Chiswick's trendy High Road with extensive array of bars, shops and restaurants. Gunnersbury Underground station (District line) is only 0.12 miles away and Chiswick Park Underground station (District line) is 0.24 miles away.

Features

Modern Development
Two Double Bedrooms
Two Bathrooms
Separate Kitchen
Private Balcony
Central Location

Chiswick High Road,
London, W4



Total area (approx.): 60.5 sq. m (651.2 sq. ft)
Balcony (approx.): 2.1 sq. m (22.6 sq. ft)

Dexters

Chiswick
388 Chiswick High Road
London
W4 5TF
Lettings
020 8995 5439

Energy Rating: C. We aim to make our particulars both accurate and reliable. However they are not guaranteed; nor do they form part of an offer or contract. If you require clarification on any points then please contact us, especially if you're traveling some distance to view. Please note that appliances and heating systems have not been tested and therefore no warranties can be given as to their good working order.

 **RICS** | Regulated
Estate Agent
and Letting Agent

dexters.co.uk