



Grosvenor Road, W4 £600,000

A well-presented first-floor, two bedroom period conversion set on a highly regarded and sought-after road. With long lease, communal garden and offered with no onward chain.

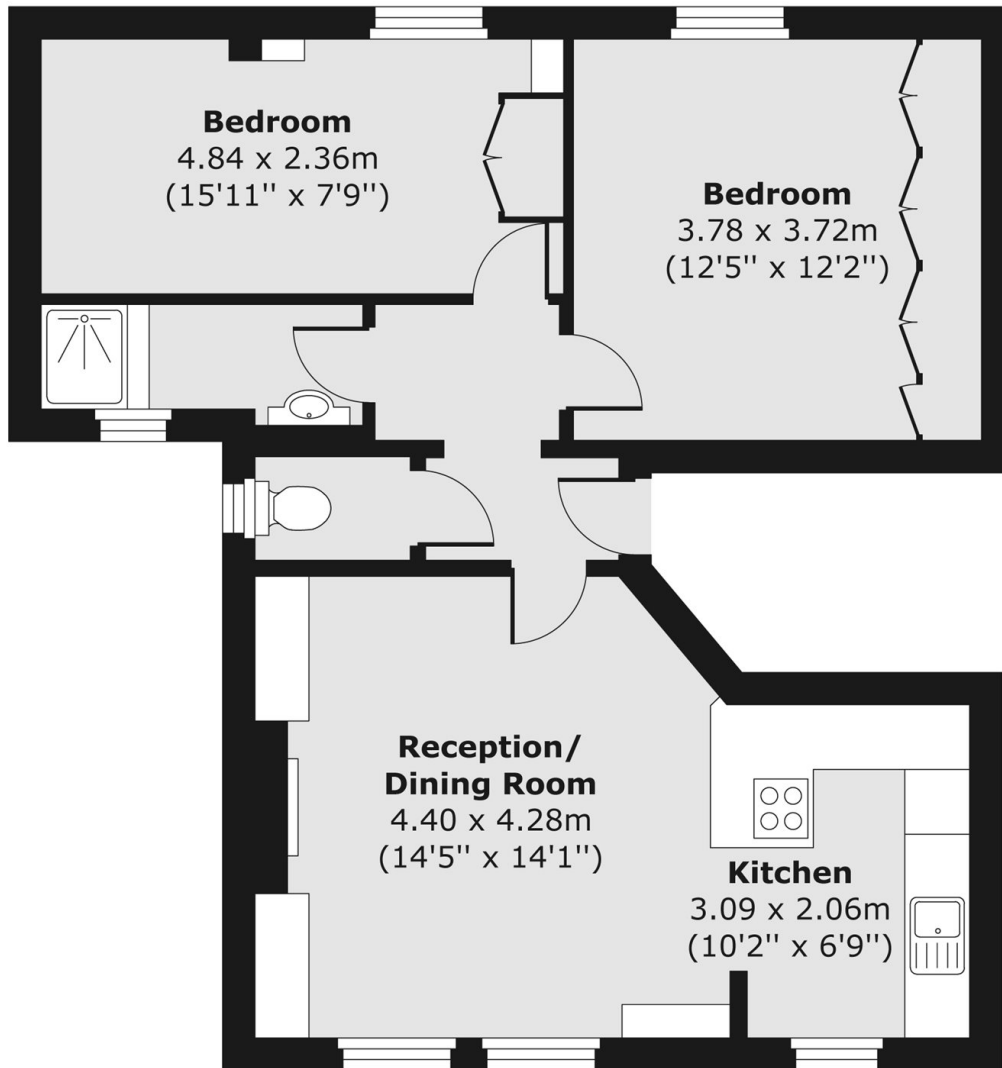
Grosvenor Road is a short walk to the river, a number of local parks and the extensive shopping and restaurant facilities on Chiswick High Road. Transport links include Gunnersbury and Chiswick Park stations, local bus routes and the A4/M4 for routes in and out of London.

Features

- Two Bedrooms
- First Floor
- Communal Garden
- Long Lease
- Central Location
- No Onward Chain

Grosvenor Road,
London, W4

First Floor



Total area (approx.) 61.13 sq. m (658 sq. ft)