

Corney Reach Way, W4

£550,000

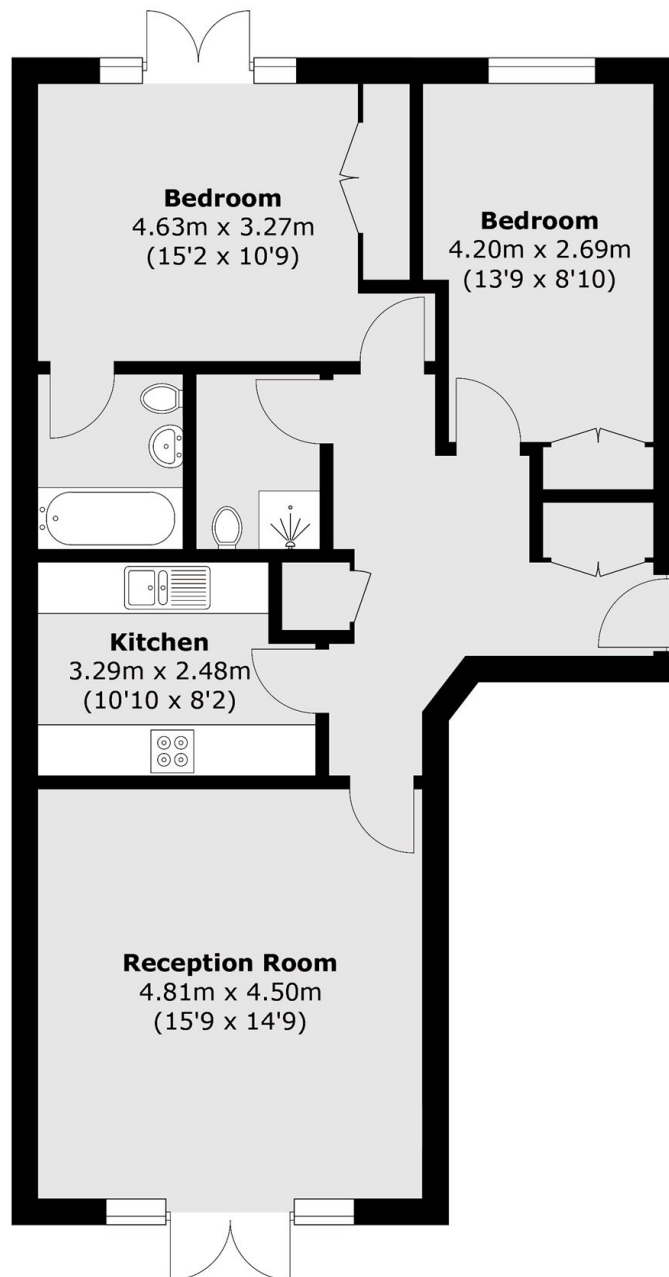
A ground floor two double bedroom, two bathroom flat with underground parking and private patios at the front and back, within the popular Corney Reach Riverside development.

Corney Reach Way is situated just moments from the Thames and Chiswick Pier. The property further benefits from use of communal gardens and is conveniently located for the recreational facilities of Chiswick House and grounds, the River Thames as well as Chiswick High Road and Turnham Green Underground Station, Chiswick (SWR) Station for trains to London Waterloo and very convenient road links.

Features

Riverside Development
Ground Floor
Two Bedrooms
Two Bathrooms
Private Patio
No Onward Chain

Corney Reach Way,
London, W4



Total area (approx.): 77.5 sq. m (834.2 sq. ft)