



Burlington Road, W4

£576 Per week

A well-presented first floor two double bedroom apartment in excellent condition located on a quiet residential street. The property has a spacious reception room with period features, an eat-in kitchen and a well-maintained communal garden.

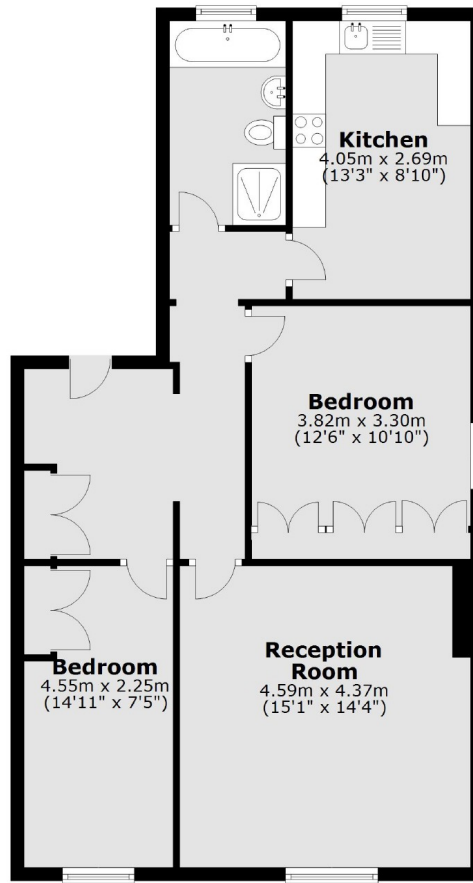
Burlington Road is located under quarter of a mile from Gunnersbury tube station, Chiswick Park tube station and the shops, restaurants and bars of Chiswick High Road.

Features

- Two Bedrooms
- High Ceilings
- Modern Finish
- Communal Garden
- Central Location
- Transport Links

Burlington Road,
London, W4

First Floor



Total area: approx. 74.6 sq. metres (802.5 sq. feet)