



Chiswick High Road, W4

£530 Per week

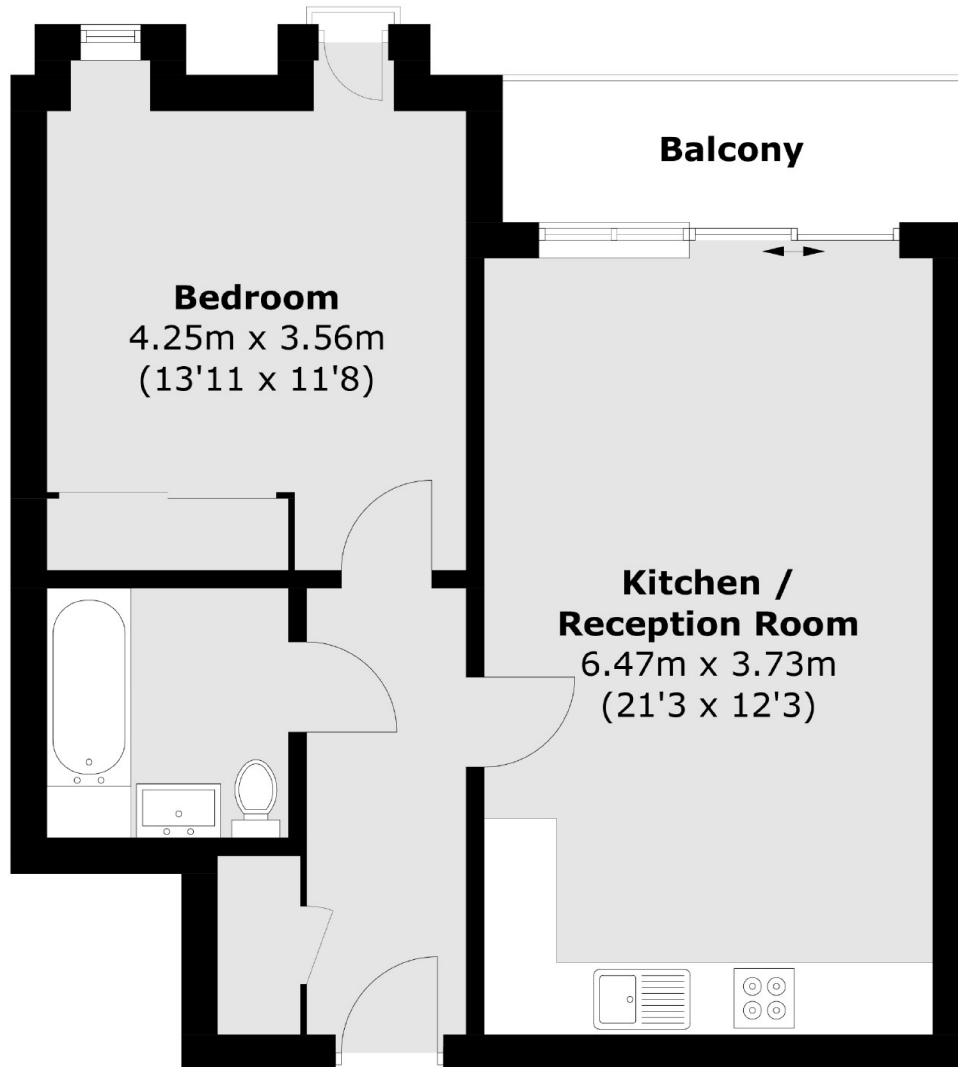
A well-presented one bedroom apartment within this new development offering one double bedroom, an open plan reception and south facing balcony.

Located on Chiswick High Road, which has multiple restaurants, boutiques and shops as well as a multitude of transport links.

Features

- New Development
- Concierge
- One Bedroom
- Open Plan
- Wood Flooring
- South Facing Balcony

Chiswick High Road,
London, W4



Total area (approx.): 50.7 sq. m (545.7 sq. ft)
Balcony : 4.5 sq. m (48.4 sq. ft)

Dexters

Chiswick
388 Chiswick High Road
London
W4 5TF
Lettings
020 8995 5439

Energy Rating: B. We aim to make our particulars both accurate and reliable. However they are not guaranteed; nor do they form part of an offer or contract. If you require clarification on any points then please contact us, especially if you're traveling some distance to view. Please note that appliances and heating systems have not been tested and therefore no warranties can be given as to their good working order.

 **RICS** | Regulated
Estate Agent
and Letting Agent

[dexters.co.uk](https://www.dexters.co.uk)