



Ealing Road, TW8

£425,000

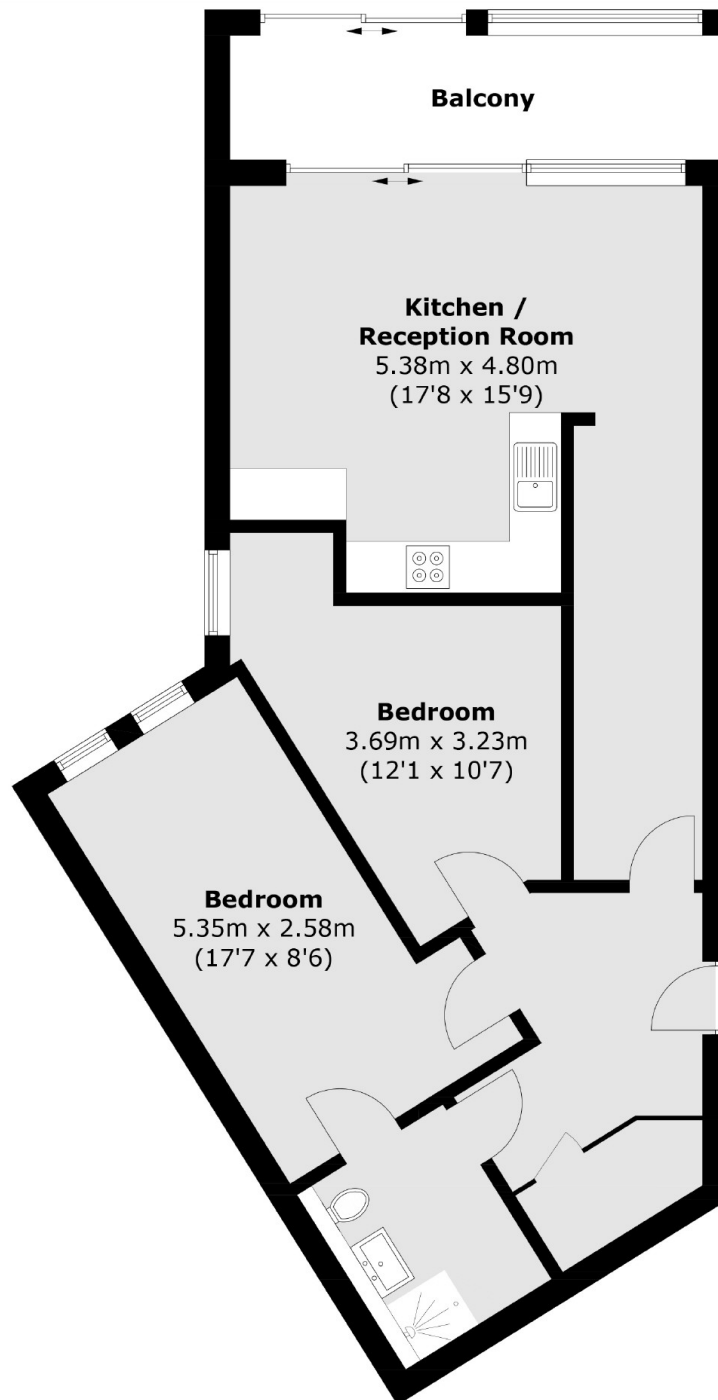
A two bedroom apartment on the fifth floor of this modern build development. The property includes a private winter garden, an on-site gym, a concierge service and secure underground parking.

Westgate House is located within half a mile walk to Brentford Station which offers train links to Waterloo taking less than 30 minutes. The property is also a short drive from the M4/A4 which provides great vehicle access into London and out West. Local High Streets are also within a mile.

Features

- Fifth Floor
- Two Double Bedrooms
- Sun Room
- Underground Parking
- Close To Transport/Amenities
- Residents Gym

Ealing Road,
Brentford, TW8



Total area (approx.): 74.5 sq. m (801.9 sq. ft)
Balcony area (approx.): 8.7 sq. m (93.6 sq. ft)

Dexters

Chiswick
388 Chiswick High Road
London
W4 5TF
Sales
020 8995 4321

Energy Rating: B. We aim to make our particulars both accurate and reliable. However they are not guaranteed; nor do they form part of an offer or contract. If you require clarification on any points then please contact us, especially if you're traveling some distance to view. Please note that appliances and heating systems have not been tested and therefore no warranties can be given as to their good working order.

RICS | Regulated
Estate Agent
and Letting Agent

dexters.co.uk