



## Colonial Drive, W4

£410 Per week

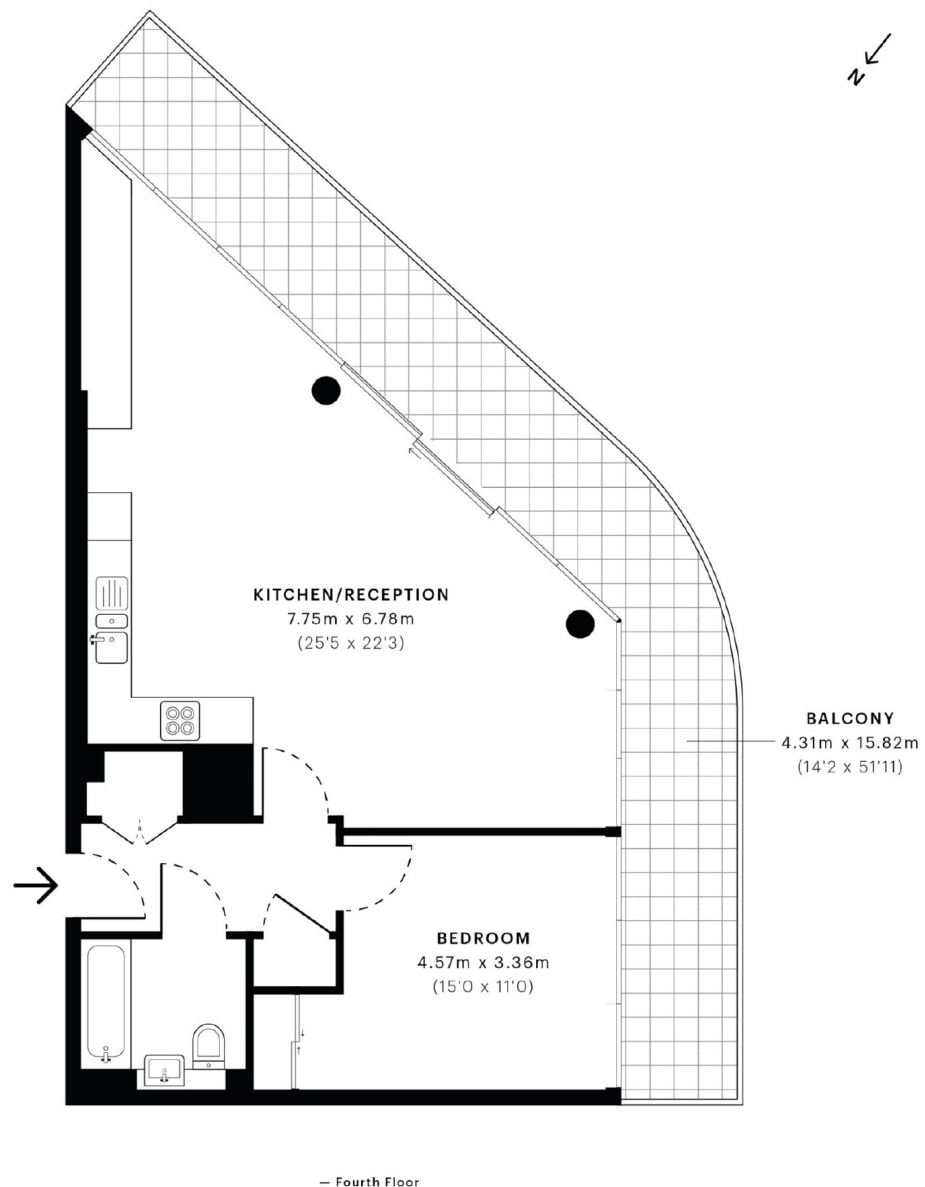
A modern one bedroom apartment in excellent condition which offers fantastic open plan living and a large private terrace overlooking Gunnersbury nature reserve.

Colonial Drive is centrally located with close transport links from Chiswick Park and Gunnersbury tube stations.

### Features

One Double Bedroom  
Modern Development  
Open Plan  
Transport Links  
South-Facing Balcony  
Central Location

## Colonial Drive, London, W4



### Contact

To arrange a viewing call our office on the number below or visit our website.



Regulated  
Estate Agent  
and Letting Agent

Energy Rating: B. We aim to make our particulars both accurate and reliable. However they are not guaranteed; nor do they form part of an offer or contract. If you require clarification on any points then please contact us, especially if you're traveling some distance to view. Please note that appliances and heating systems have not been tested and therefore no warranties can be given as to their good working order.