



Huntingdon Gardens, W4

£425,000

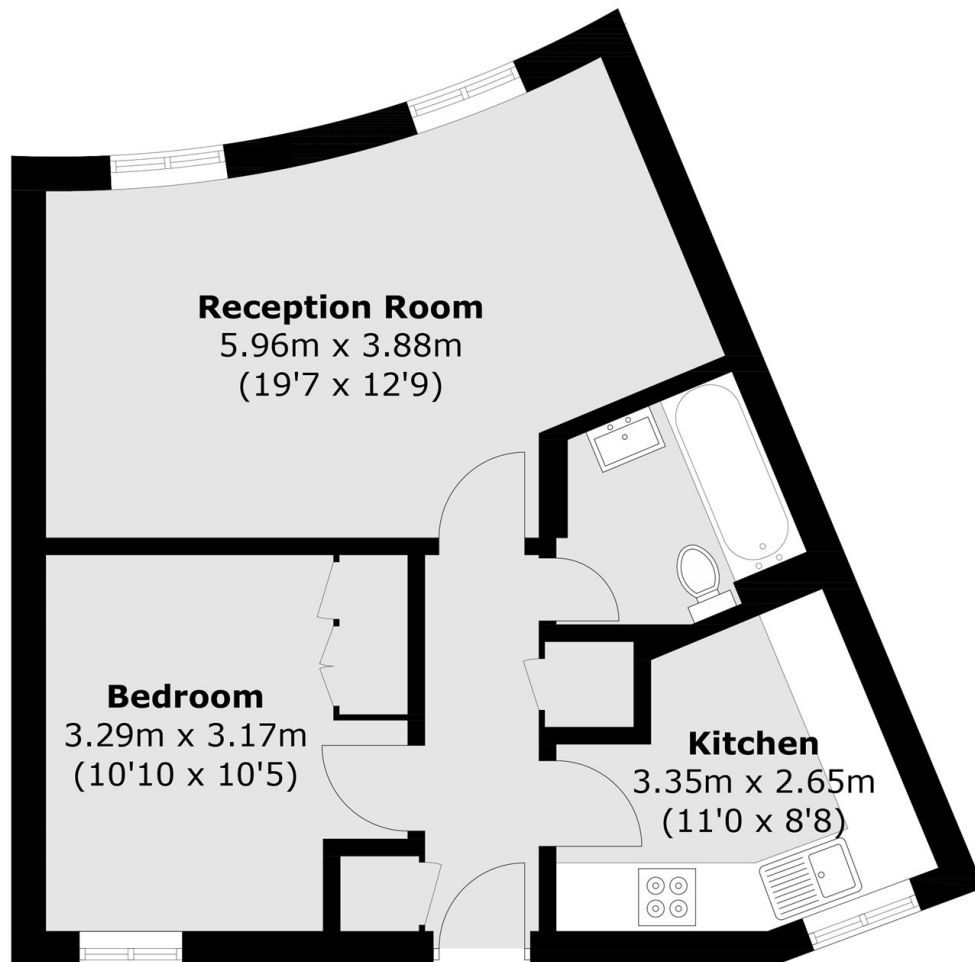
An immaculately presented ground floor, one double bedroom apartment set within a sought-after private development. Benefits include perfectly maintained communal gardens, share of freehold, allocated off-street parking and no onward chain.

The area offers a wide selection of amenities including Chiswick House & Gardens, local restaurants, sports & health clubs and excellent transport connections into and out of town including Chiswick Station.

Features

- Private Development
- Ground Floor
- One Double Bedroom
- Share Of Freehold
- Allocated Off-Street Parking
- No Onward Chain

Huntingdon Gardens, London, W4



Total area (approx.): 45.2 sq. m (486.5 sq. ft)