



John Bull Place, W4

£950,000

A newly built three double bedroom, two bathroom house located in prime central Chiswick. With large open-plan living and entertaining space, off-street parking and offered with no onward chain. We have two houses available to buy next door to each other.

John Bull Place is located within a few minutes walk of Gunnersbury Underground Station (District & Overground) as well as local bus links towards the shops and restaurants of Chiswick High Road. Kew Bridge Station is also near by providing fast access to central London. Local schools, green spaces and the river are also close by.

Features

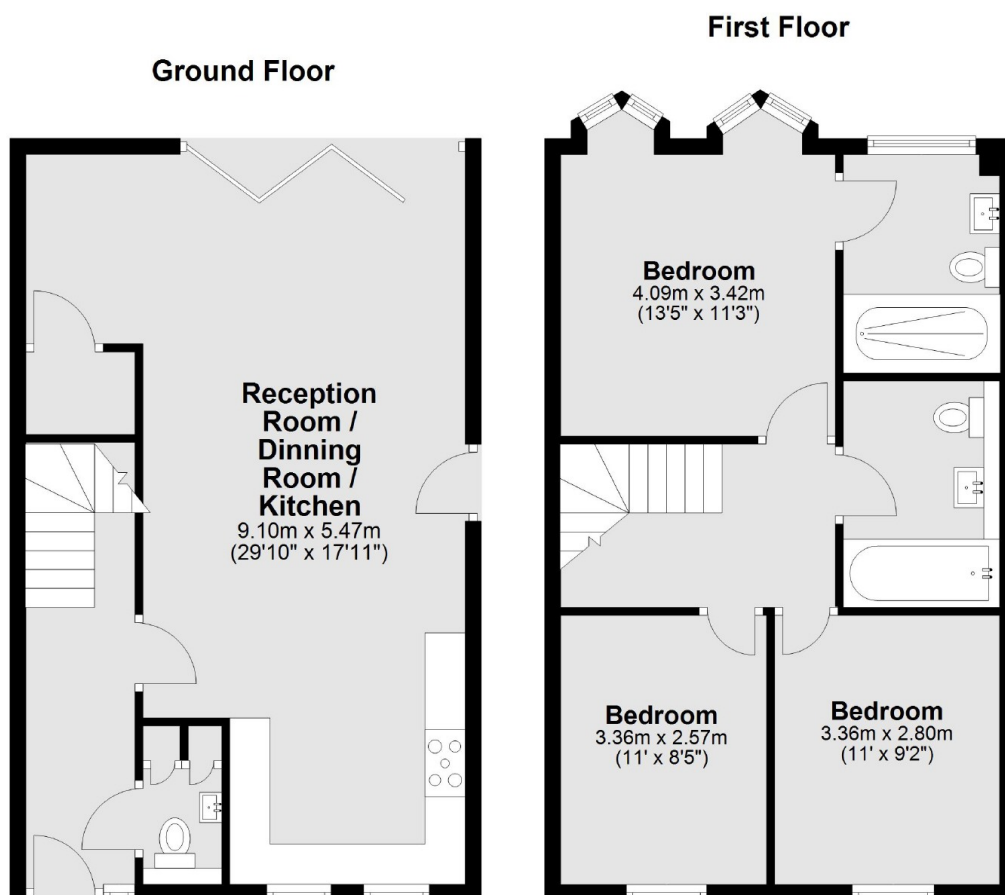
- Modern Build
- Three Double Bedrooms
- Two Bathrooms
- Off-Street Parking
- No Onward Chain
- Close To Transport



John Bull Place, W4



John Bull Place, London, W4



Total area: approx. 100.3 sq. metres (1079.9 sq. feet)

Dexters

Chiswick
388 Chiswick High Road
London
W4 5TF
Sales
020 8995 4321

Energy Rating: . We aim to make our particulars both accurate and reliable. However they are not guaranteed; nor do they form part of an offer or contract. If you require clarification on any points then please contact us, especially if you're traveling some distance to view. Please note that appliances and heating systems have not been tested and therefore no warranties can be given as to their good working order.

 **RICS** | Regulated
Estate Agent
and Letting Agent

dexters.co.uk