



Holland Gardens, TW8

£750,000

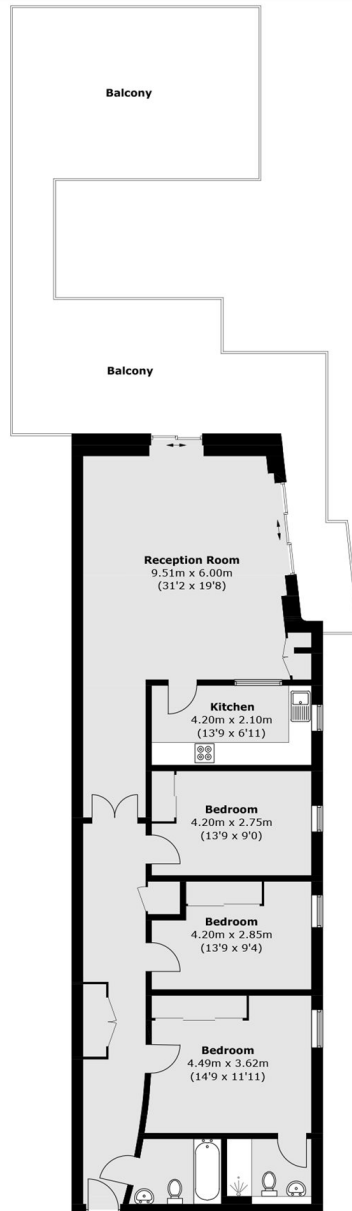
A well-presented three double bedroom, two bathroom penthouse apartment with an impressive south-facing terrace enjoying views across the River Thames. Further benefits include two secure underground parking spaces 24-hour concierge, residents gym/sauna and no onward chain.

Holland Gardens is a gated development conveniently located close to Kew Bridge and Brentford stations, with regular services to London Waterloo. Brentford High Street offers a variety of amenities, while the nearby A4/M4 provides excellent access into and out of London.

Features

- Penthouse
- Three Double Bedrooms
- Two Bathrooms
- Huge South-Facing Terrace
- River View
- Two Parking Spaces

Holland Gardens, Brentford, TW8



Total area (approx.): 116.4 sq. m (1,252.9 sq. ft)
Balcony: 64.1 sq. m (690.0 sq. ft)

Dexters

Chiswick
388 Chiswick High Road
London
W4 5TF
Sales
020 8995 4321

Energy Rating: B. We aim to make our particulars both accurate and reliable. However they are not guaranteed; nor do they form part of an offer or contract. If you require clarification on any points then please contact us, especially if you're traveling some distance to view. Please note that appliances and heating systems have not been tested and therefore no warranties can be given as to their good working order.

 **RICS** | Regulated
Estate Agent
and Letting Agent

[dexters.co.uk](https://www.dexters.co.uk)