



Meade Close, W4

£545,000

This bright three bedroom apartment is set within a well-maintained development and offers a spacious living area, modern kitchen, direct access to a shared garden and no onward chain. The property also benefits from two toilets and underfloor heating in both the kitchen and bathroom.

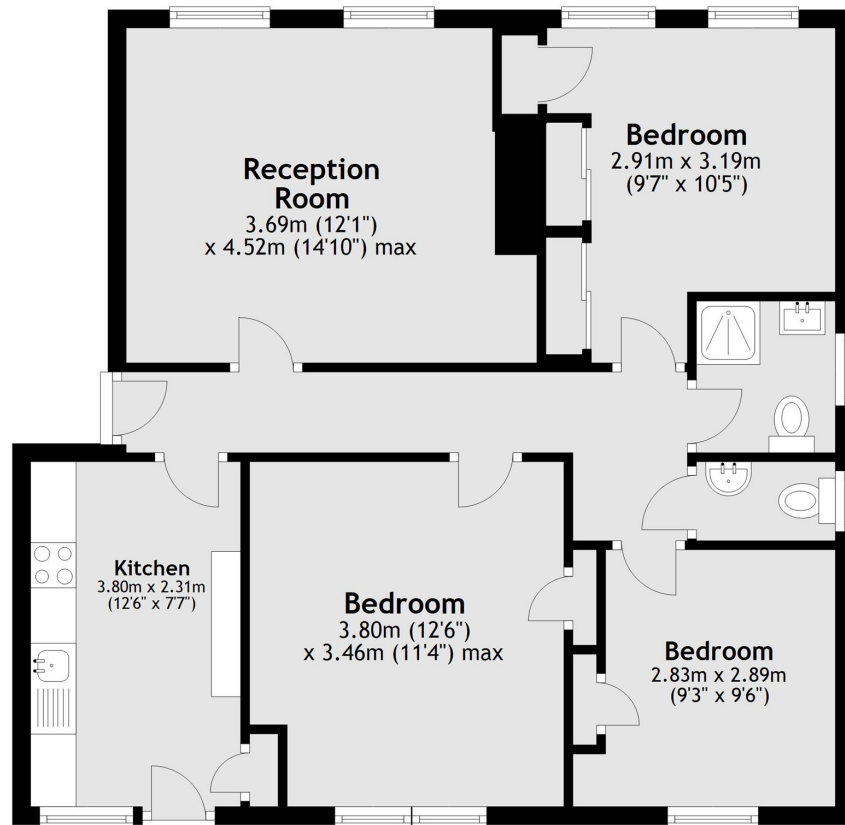
Meade Close is within walking distance to an array of shops and restaurants as well as the historic pubs along this stretch of the Thames. Gunnersbury (District Line and Overground Line) and Kew Bridge (National Rail) are the closest stations and the A4 / M4 is a short drive away

Features

Strand On The Green
Ground Floor
Three Bedrooms
Communal Garden
Close To River
No Onward Chain

Meade Close, London, W4

Ground Floor



Total area: approx. 71.1 sq. metres (765.0 sq. feet)