



Chiswick High Road, W4 £484 PCM

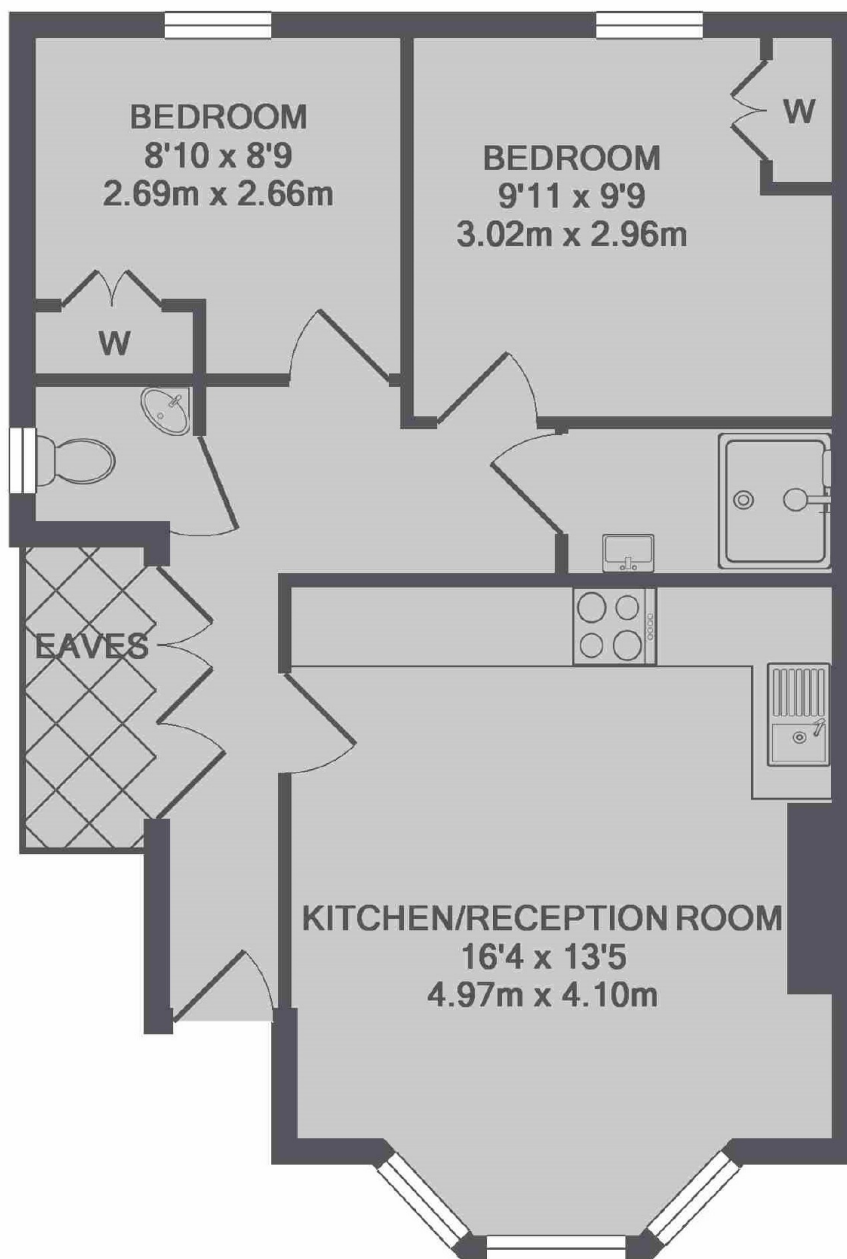
A raised ground floor period conversion apartment, this property is in excellent condition throughout whilst still retaining many of the period features. This would be ideal for first time buyers and investors alike.

Both Kew Bridge and Gunnersbury Stations are both within half a mile of the flat and the M4/A4 also provide easy access in and out of Town.

Features

- Two Bedrooms
- One Bathroom
- Period Conversion
- Close To River Thames
- Raised Ground Floor
- Excellent Condition

Chiswick High Road,
London, W4



TOTAL APPROX. FLOOR AREA 519 SQ.FT. (48.2 SQ.M.)

Dexters

Chiswick
388 Chiswick High Road
London
W4 5TF
Sales
020 8995 4321

Energy Rating: C. We aim to make our particulars both accurate and reliable. However they are not guaranteed; nor do they form part of an offer or contract. If you require clarification on any points then please contact us, especially if you're traveling some distance to view. Please note that appliances and heating systems have not been tested and therefore no warranties can be given as to their good working order.

RICS | Regulated
Estate Agent
and Letting Agent

dexters.co.uk