



## Huntingfield Road, SW15

### £699,950

A two/three bedroom end of terrace family home with a huge mature rear garden and the potential (STP) to be further extended and improved located in the sought after Dover House Estate.

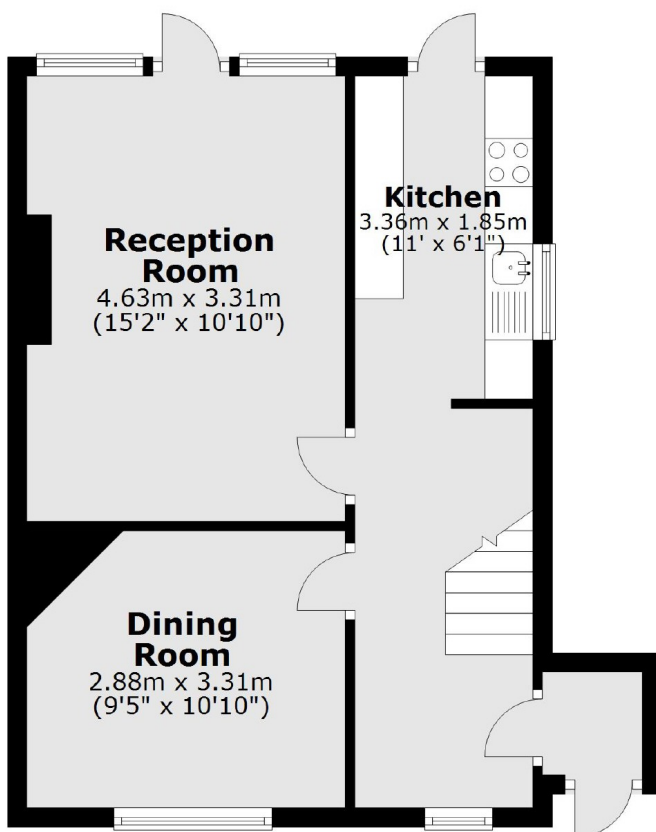
Huntingfield Road is a quiet residential street towards the Putney Heath end of the estate so ideal for easy access onto Richmond Park and Wimbledon Common.

### Features

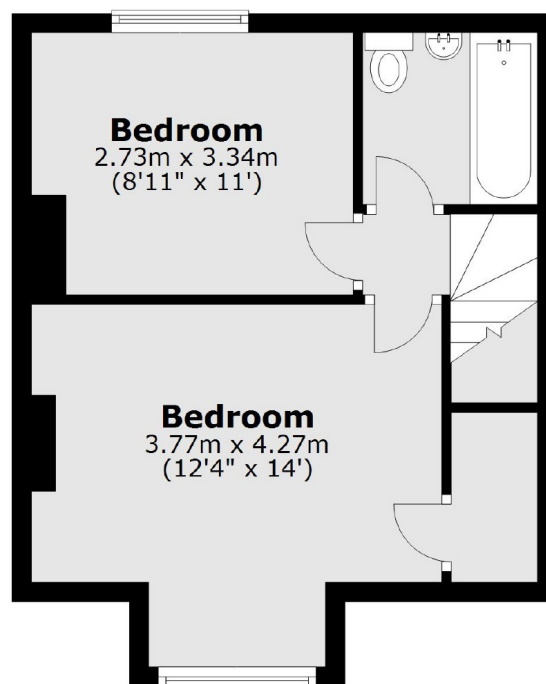
- Almost 800 sq ft
- End Of Terrace
- Flexible Layout
- Incredible Garden
- Potential To Extend (STP)
- No Chain

# Huntingfield Road, London, SW15

## Ground Floor



## First Floor



Total area: approx. 72.9 sq. metres (785.0 sq. feet)