

West Hill, SW18

£350,000

A Large 618 Sq ft, split-level, one bedroom period maisonette. The flat is accessed from Merton Road via its own front door. The ground floor consists of a large open-plan living room with high ceilings, luxury vinyl grey wood flooring, and a newly renovated kitchen. The space is ideally laid out for living, dining, and entertaining. The bedroom and modern bathroom are situated upstairs.

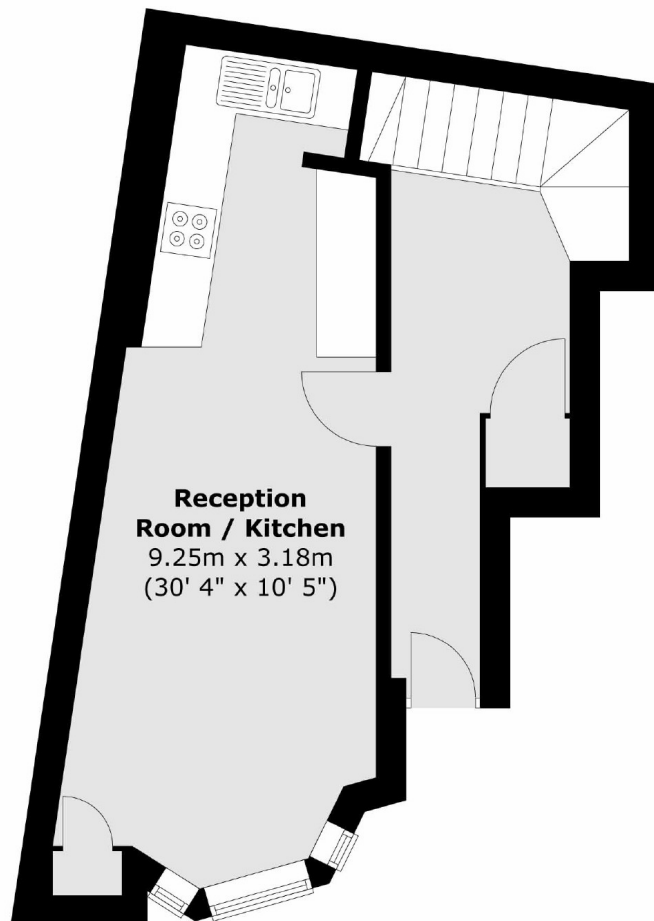
The flat is in an ideal location with Wandsworth high street just round the corner and Putney high street only a few bus stops or short walk away. The Southside shopping centre is also close by with plenty of shops, a Cineworld and gaming venues. There are also plentiful local pubs and restaurants close by. Wandsworth Town and Putney Train & Tubes are within walking distance.

Features

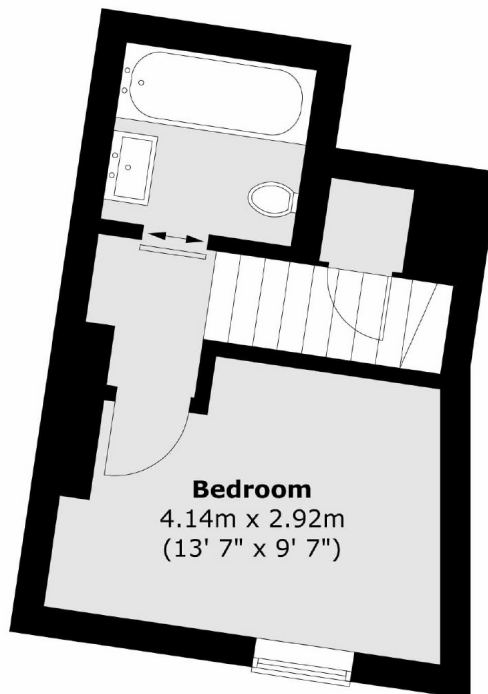
- Split Level
- Period Conversion
- Own front door
- Open Plan Living Area
- Ample Storage
- Chain Free

West Hill, London, SW18

Ground Floor



First Floor



Total area (approx.) : 53.1 sq. m (572 sq. ft)