



**Schubert Road, SW15**

**£1,850,000**

**Dexters**





## Schubert Road, SW15

Available for the first time in over thirty years, this beautiful four-bedroom, two bathroom Victorian family house, with a self-contained lower ground flat, is an incredibly unique opportunity.

The raised ground floor features a spacious reception room with a bay window and large fireplace. To the rear is a generous kitchen-dining area with direct access to the west-facing garden, which also benefits from rear access and could easily be altered to offer off-street parking.

On the first floor is an elegant reception room also with a bay window and large fireplace and the principal bedroom with an en-suite bathroom and balcony. The second floor offers three further double bedrooms, all with sash windows and ample storage, as well as a modern family bathroom. The expansive loft has been converted into the rafters and could create an additional bedroom.

The property also benefits from a spacious and high ceilinged self-contained one bedroom flat on the Lower Ground Floor, with a new kitchen, extended lobby perfect for working from home and access onto the Garden.

Schubert Road is a pretty tree lined street in East Putney, close to the green expanse of Wandsworth Park, alongside the River.

### Features

- Five Double Bedrooms
- 1914 sqft
- Three Bathrooms and WC
- Self contained Flat
- West Facing Garden
- Quiet Tree Lined Road





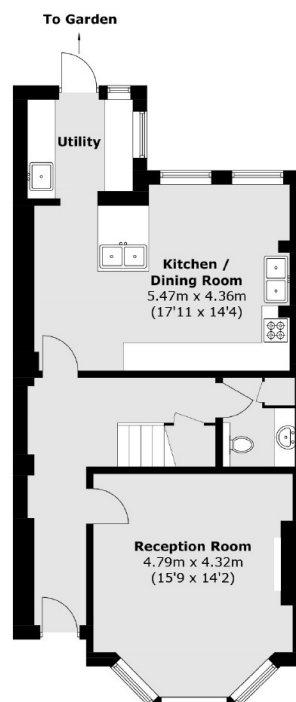
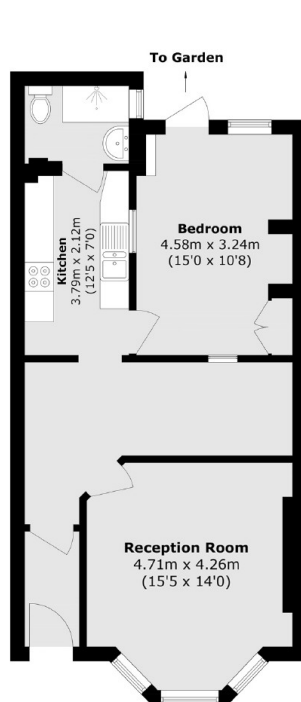
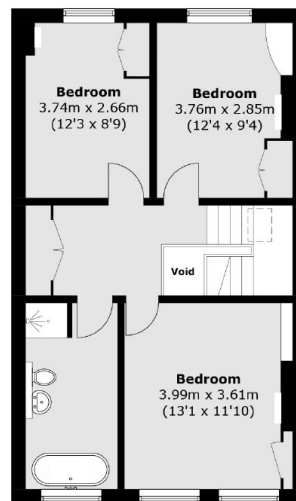
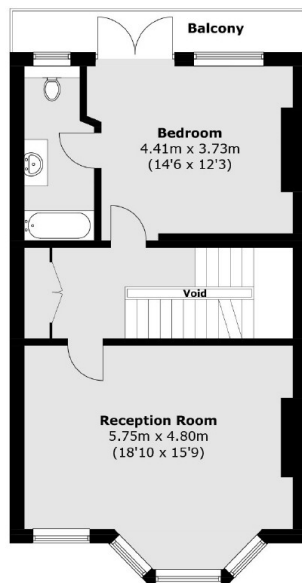








# Schubert Road, London, SW15



Total area (approx.): 177.9 sq. m (1,914.9 sq. ft)  
(Excluding Void)

Balcony: 5.5 sq. m (59.2 sq. ft)

Basement / Self Contained Flat area: 63.0 sq. m (678.1 sq. ft)

## Dexters

Putney  
176 Putney High Street  
London  
SW15 1RS  
Sales  
020 8789 9999

Energy Rating: . We aim to make our particulars both accurate and reliable. However they are not guaranteed; nor do they form part of an offer or contract. If you require clarification on any points then please contact us, especially if you're traveling some distance to view. Please note that appliances and heating systems have not been tested and therefore no warranties can be given as to their good working order.

**RICS** Regulated  
Estate Agent  
and Letting Agent

dexters.co.uk